

# Utah Area of Interest Summary Report

North Tooele Fire District



Report was generated using <https://wildfirerisk.utah.gov>  
Report generated: 7/23/2024

# Table of Contents

- Disclaimer
- Introduction
- Fire History Statistics
- Wildfire Hazard Potential
- Risk to Drinking Watersheds and Population
- Burn Probability
- Damage Potential
- Structure Exposure Score
- Conditional Risk to Potential Structures
- Risk to Potential Structures
- Probability of Exceeding Manual Control
- Probability of Exceeding Mechanical Control
- Probability of Extreme Fire Behavior
- Suppression Difficulty Index
- Flame Length
- Rate of Spread
- Heat per Unit Area
- Conditional Ember Production
- Conditional Sources of Ember Load to Buildings
- Housing-Unit Density (HUDEN)

*To navigate to a specific section of the report, press the Ctrl key and click on the section title.*

## Citation:

Utah Division of Forestry, Fire, and State Land. 2024. Utah Area of Interest Summary Report [Computer Application]. Retrieved from <https://wildfirerisk.utah.gov>.



## Disclaimer

The information contained herein is provided as a public service and is for NON-COMMERCIAL, INFORMATIONAL PURPOSES ONLY, with the understanding that THE INFORMATION IS BEING PROVIDED "AS IS" AND WITHOUT WARRANTY OF ANY KIND EITHER EXPRESS, IMPLIED, OR STATUTORY, INCLUDING BUT NOT LIMITED TO IMPLIED WARRANTIES OF MERCHANTABILITY AND FITNESS FOR A PARTICULAR PURPOSE. The information provided does not constitute legal advice.

The Utah Division of Forestry, Fire, and State Lands do not warrant, either expressed or implied, the accuracy, completeness, reliability, or suitability of the information. Nor do the providers warrant that the use of this information is free of any claims of copyright infringement. Property boundaries included in any product do not represent an on-the-ground survey suitable for legal, engineering, or surveying purposes. They represent only the approximate relative locations.

By accessing this website and/or data contained within the databases, you agree to use all information at your own risk and you hereby release the providers and their employees, agents, contractors, and suppliers from any and all responsibility and liability associated with your use. In no event shall the providers be liable for any damages arising in any way out of the use of the products or website, or use of the information contained in the databases including, but not limited to, the Wildfire Risk Assessment, and products published or derived from these data. The providers are not responsible for third-party Internet pages or other documents on the Internet (hyperlinks). The providers hereby explicitly state that, at the time of setting the link, there was no evidence of illegal content on the respective website. The providers have no influence on the current or future design, the content or the copyright of the linked website.

The user agrees to assume the entire responsibility and liability related to the use of this information, including, but not limited to the Wildfire Risk Assessment, and products published or derived from these data. The user agrees not to use any information or data on this site to cause harm to any third person and agrees to indemnify the providers for any harm caused by the user through the use of the website.

IN NO EVENT WILL THE PROVIDERS BE LIABLE TO YOU OR TO ANY THIRD PARTY FOR ANY DIRECT, INDIRECT, INCIDENTAL, CONSEQUENTIAL, SPECIAL OR EXEMPLARY DAMAGES OR LOST PROFIT RESULTING FROM ANY USE OR MISUSE OF THESE DATA, EVEN IF THE USER HAS BEEN ADVISED OF THE POSSIBILITY OF SUCH DAMAGE.

# Introduction

## Utah Area of Interest Summary Report

The Area of Interest tool allows users of the Advanced Viewer application to define a specific location to further explore its wildfire risks. This information can then be exported, providing a detailed summary using attributes selected by the Utah Division of Forestry, Fire, and State Land. The data layers for many of these map products were created with publicly available data and information submitted by volunteer fire departments. These map products have been summarized explicitly for the active Area of Interest. To access all data layers as a GIS file, users must “export data as a .zip file” after creating an area of interest.



This report was designed so that information can be copied and pasted into other plans, reports, or documents depending on user needs.

Examples include, but are not limited to, Community Wildfire Protection Plans, Local Fire Plans, Fuels Mitigation Plans, Hazard Mitigation Plans, Homeowner Risk Assessments, and Forest Management or Stewardship Plans.

The Utah Wildfire Risk Assessment provides a consistent, comparable set of scientific results to be used as a foundation for wildfire mitigation and prevention planning in Utah.

Results of an assessment can be used to help prioritize areas in the state where mitigation treatments, community interaction, and education or tactical analyses might be necessary to reduce risk from wildfires.

The Utah Wildfire Risk Explorer’s map products and descriptions included in this summary report are designed to provide the information needed in support of the following key priorities:

- Identify areas that are most prone to wildfire.
- Plan and prioritize fuel treatment within programs.
- Allow agencies to work together to better define priorities and improve emergency response, particularly across jurisdictional boundaries.
- Increase communication with local residents and the public to address community priorities and needs.
- Identify areas where additional tactical planning may be desirable, specifically related to mitigation projects and Community Wildfire Protection Planning.
- Provide the information necessary to support resource, budget, and funding requests.
- Plan for response and wildfire suppression resource needs.

## Map Products and Descriptions

Each map product in this Summary Report is accompanied by a general description, table, chart, or map. Please see the table below for a list of data layers available in the Summary Report.

Utah WRAP Layer	Description
<b>Fire History Statistics</b>	Fire history statistics provide insight as to the number of fires, acres burned, and cause of fires, and are useful for fire prevention and mitigation planning.
<b>Wildfire Hazard Potential</b>	The wildfire hazard potential (WHP) dataset represents an index that quantifies the relative potential for wildfire that may be difficult to control.
<b>Risk to Drinking Watersheds and Population</b>	The Risk to Drinking Watersheds and Population layer was created by multiplying wildfire threat (in the form of the Structure Exposure Score) by potential impacts (in a metric incorporating three factors: the Suppression Difficulty Index, estimated surface drinking water importance, and population density).
<b>Burn Probability</b>	This dataset is a 30-m cell size raster representing annual burn probability (BP) across the analysis area.
<b>Damage Potential</b>	Damage Potential (DP) represents the potential consequences of fire to a home at a given location if a fire were to occur and if a home were located there.
<b>Structure Exposure Score</b>	Structure Exposure Score (SES) combines wildfire likelihood (burn probability) and consequence (represented by Damage Potential) assuming a home is present on every pixel.
<b>Conditional Risk to Potential Structures</b>	The conditional risk to potential structures (cRPS) dataset represents the potential consequences of fire to a home at a given location, if a fire occurs there and if a home were located there.
<b>Risk to Potential Structures</b>	The expected risk to potential structures (RPS) dataset represents a measure that integrates wildfire likelihood and intensity with generalized consequences to a home on every pixel.
<b>Probability of Exceeding Manual Control</b>	This dataset represents the probability of heading flame lengths exceeding 4 feet, which is generally considered the threshold for exceeding the possibility of manual control during fire operations.
<b>Probability of Exceeding Mechanical Control</b>	This dataset represents the probability of heading flame lengths exceeding 8 feet, which is generally considered the threshold for exceeding the possibility of mechanical control during fire operations.
<b>Probability of Extreme Fire Behavior</b>	This dataset represents the probability of heading flame lengths exceeding 11 feet, which is generally considered the threshold for extreme fire behavior during fire operations.
<b>Suppression Difficulty Index</b>	Wildfire Suppression Difficulty Index is a quantitative rating of relative difficulty in performing fire control work.
<b>Flame Length</b>	This dataset represents the weighted-average flame length (FL) in feet for a given pixel in the fuelscape (including any contribution of crown fuel).
<b>Rate of Spread (chains/hr)</b>	This dataset represents the weighted-average rate of spread (ROS) in chains per hour for a given pixel in the fuelscape (including any contribution of crown fire spread rate).
<b>Heat per Unit Area</b>	This dataset represents the weighted-average heat per unit area (HPA) in kilojoules per square meter for a given pixel in the fuelscape (including any contribution of crown fuel).

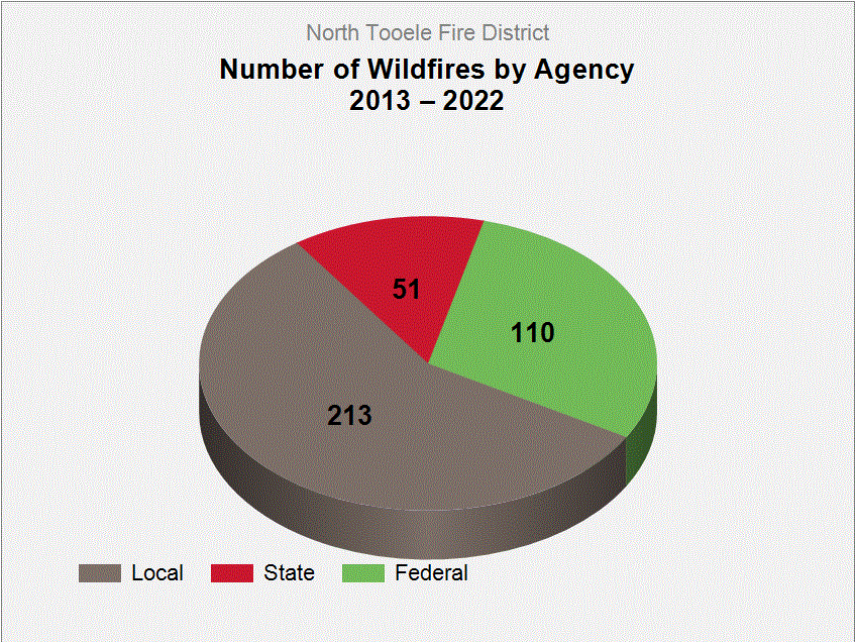
Utah WRAP Layer	Description
<b>Conditional Ember Production</b>	This dataset indicates where embers are originating when fires occur (so they could be targeted for treatment).
<b>Conditional Sources of Ember Load to Buildings</b>	This dataset indicates where embers might land near buildings.
<b>Housing-Unit Density (HUDEN)</b>	This layer displays housing-unit density.

# Fire History Statistics

## Description

Fire history statistics provide insight into data related to reported wildfires in Utah. These statistics are useful for fire prevention and mitigation planning. They can be used to quantify the level of fire business, determine the time of year most fires typically occur and develop a fire prevention program aimed at reducing the fire occurrence rate based on specific fire cause information.

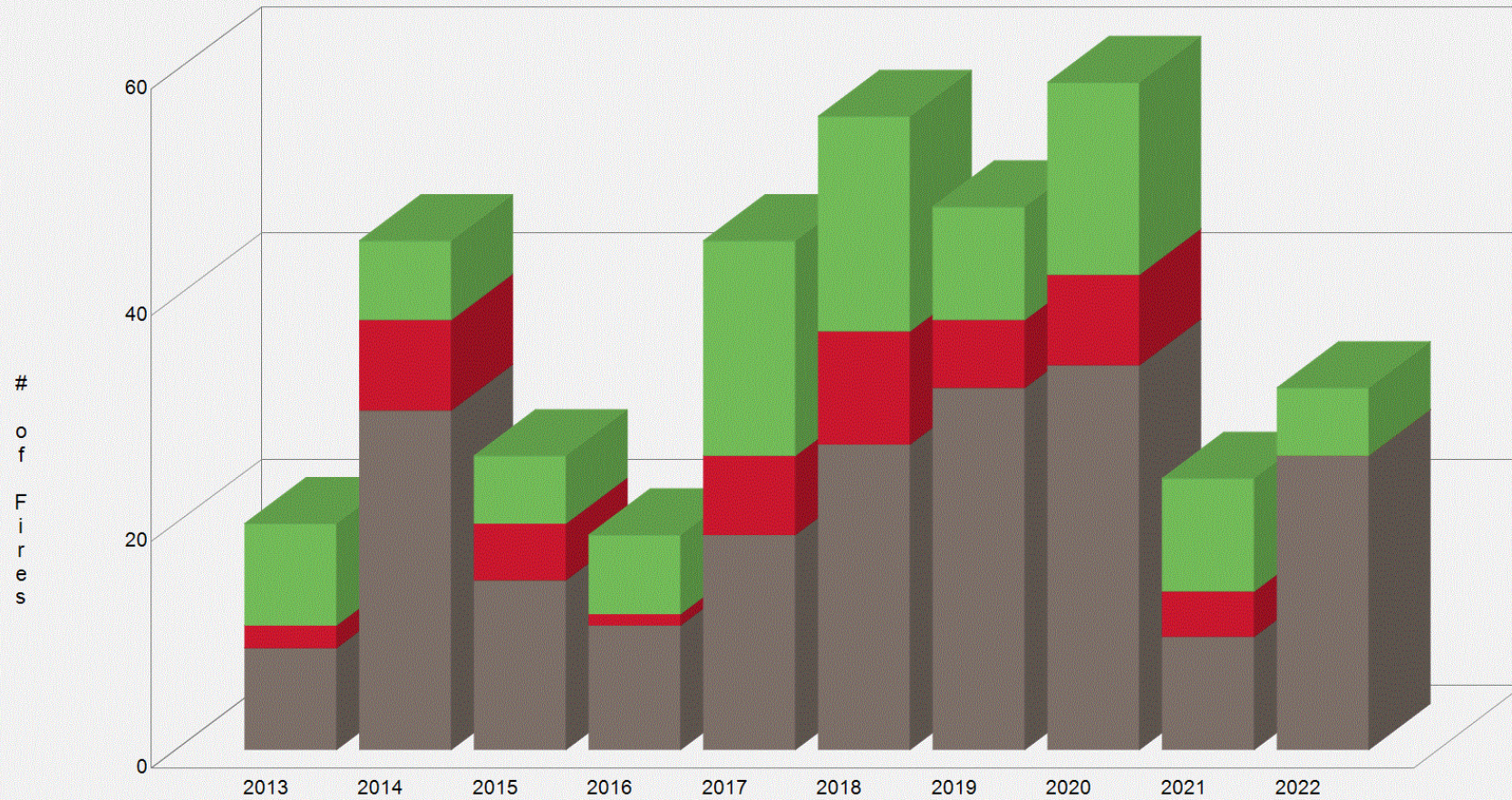
Ten years of historic fire report data where fires had a specific defined location were used to create the fire occurrence summary charts. Wildfire Ignition data was compiled from federal and state sources for the years 2013 through 2022.





North Tooele Fire District

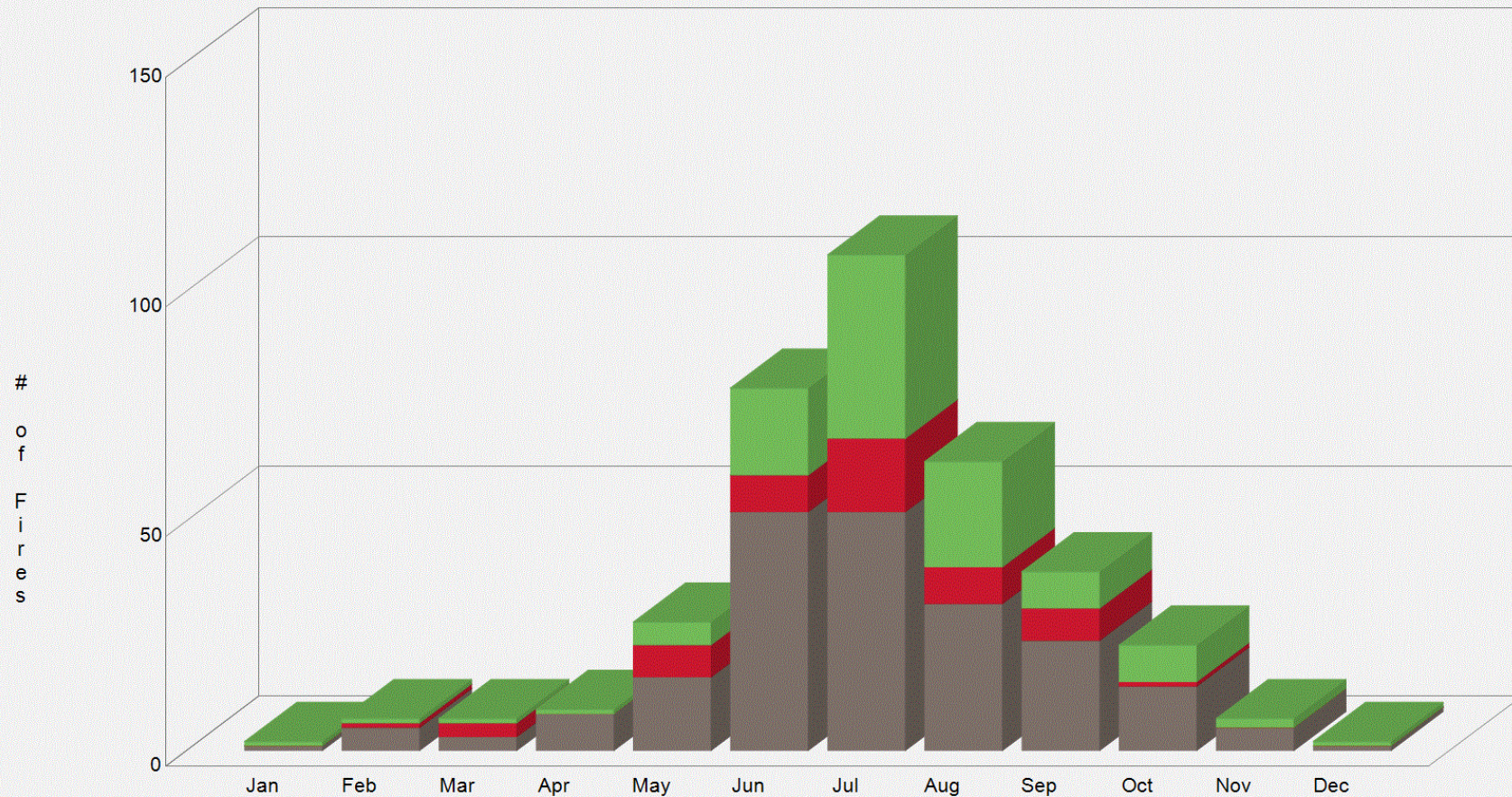
**Number of Wildfires Reported by Agency  
2013 – 2022**



	2013	2014	2015	2016	2017	2018	2019	2020	2021	2022
Local	9	30	15	11	19	27	32	34	10	26
State	2	8	5	1	7	10	6	8	4	0
Federal	9	7	6	7	19	19	10	17	10	6



North Tooele Fire District  
**Number of Wildfires Reported per Month by Agency**  
 2013 – 2022



	Jan	Feb	Mar	Apr	May	Jun	Jul	Aug	Sep	Oct	Nov	Dec
Local	1	5	3	8	16	52	52	32	24	14	5	1
State	0	1	3	0	7	8	16	8	7	1	0	0
Federal	1	1	1	1	5	19	40	23	8	8	2	1



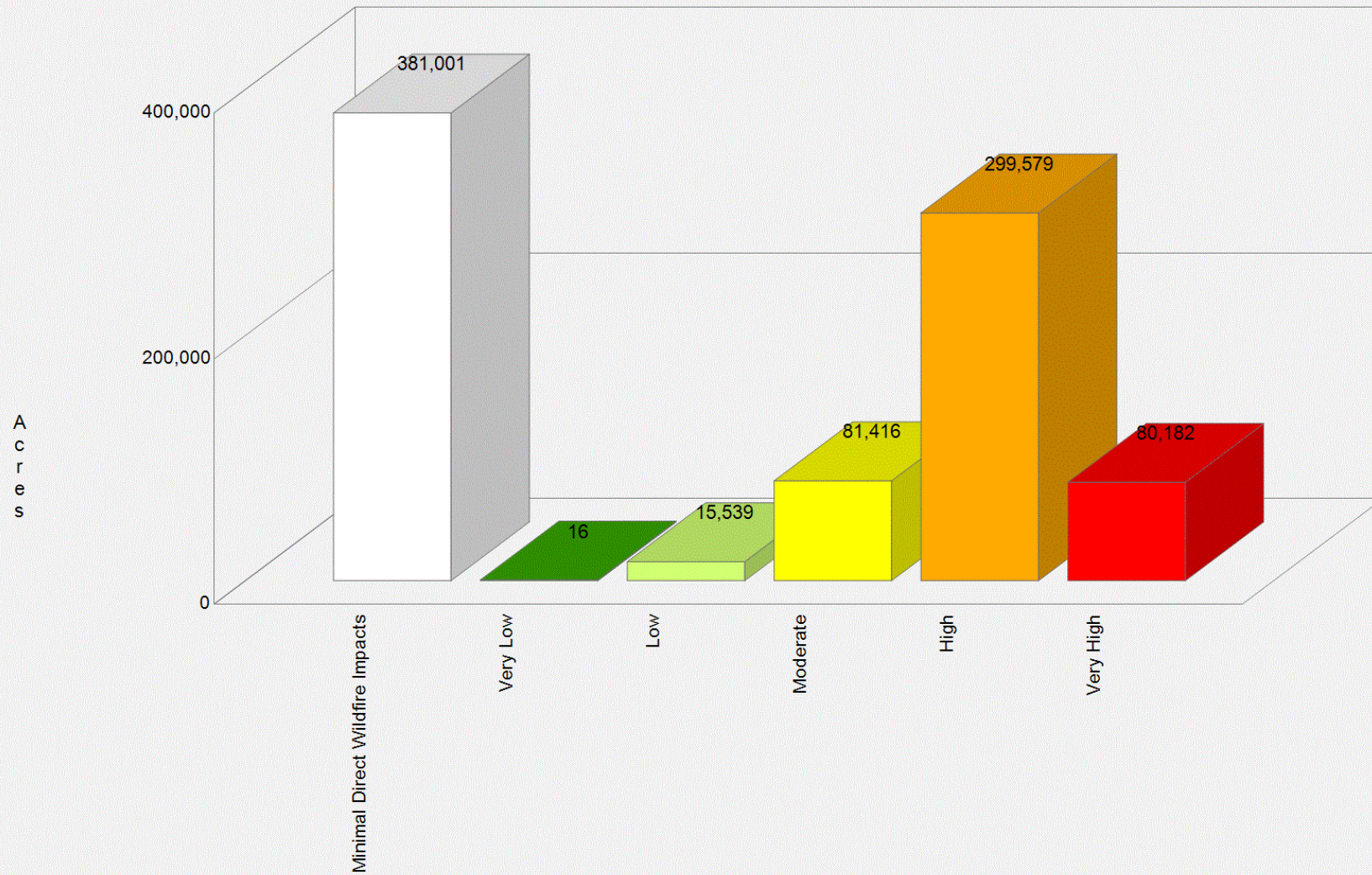
# Wildfire Hazard Potential

The wildfire hazard potential (WHP) dataset represents an index that quantifies the relative potential for wildfire that may be difficult to control. WHP can be used as a measure to help prioritize where fuel treatments may be needed.

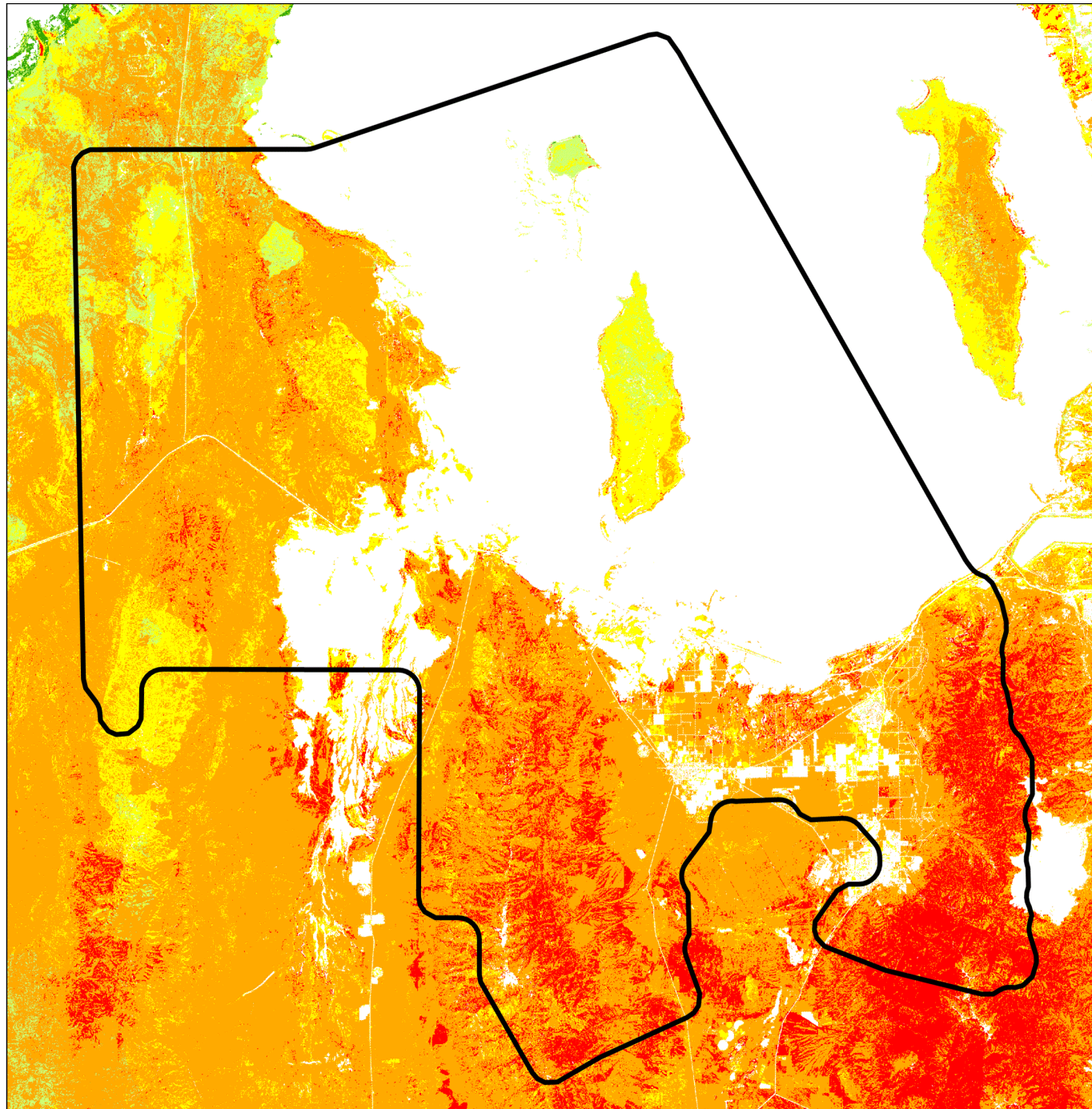
	Wildfire Hazard Potential Category	Acres	Percent
	Minimal Direct Wildfire Impacts	381,001	44.4 %
	Very Low	16	0.0 %
	Low	15,539	1.8 %
	Moderate	81,416	9.5 %
	High	299,579	34.9 %
	Very High	80,182	9.3 %
	<b>Total</b>	<b>857,733</b>	<b>100.0 %</b>



### North Tooele Fire District Wildfire Hazard Potential



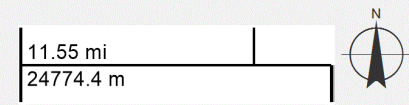




North Tooele Fire District

**Wildfire Hazard Potential**

- Minimal Direct Wildfire Impacts
- Very Low
- Low
- Moderate
- High
- Very High



Utah Wildfire Risk Assessment  
[wildfirerisk.utah.gov](http://wildfirerisk.utah.gov)

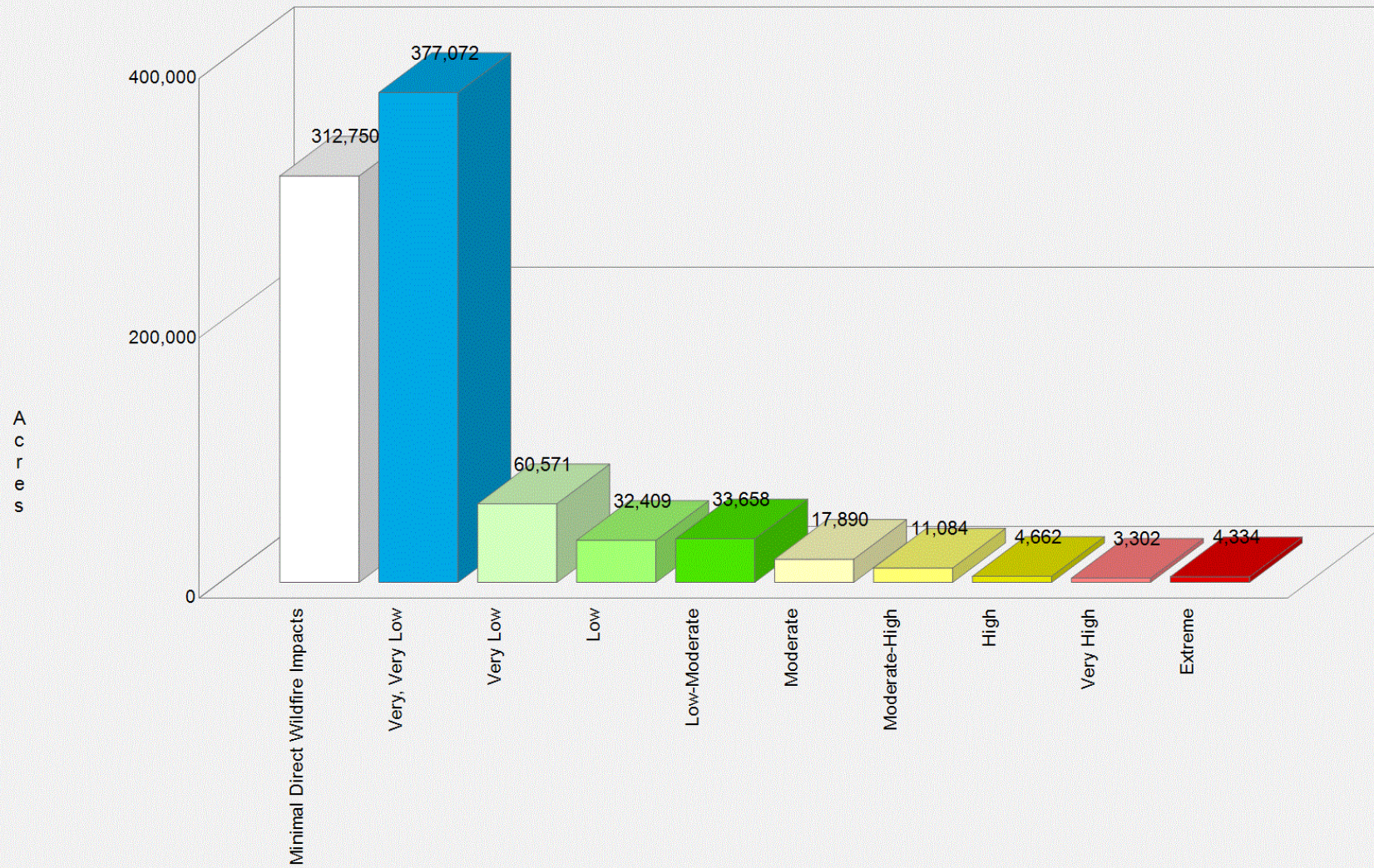
# Risk to Drinking Watersheds and Population

The Risk to Drinking Watersheds and Population layer was created by multiplying wildfire threat (in the form of the Structure Exposure Score) by potential impacts (in a metric incorporating three factors: the Suppression Difficulty Index, estimated surface drinking water importance, and population density).

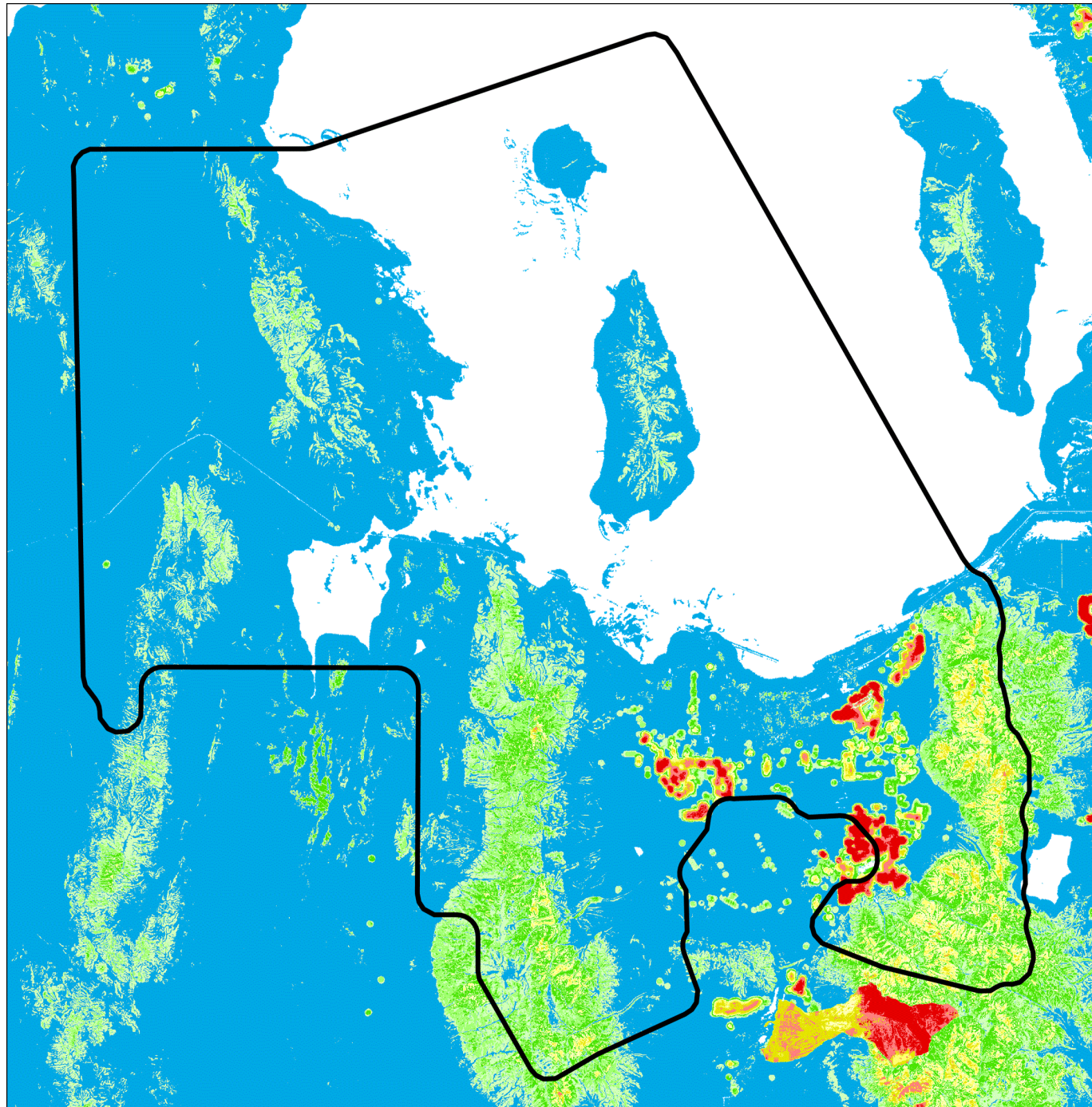
	Risk to Drinking Watersheds and Population Category	Acres	Percent
	Minimal Direct Wildfire Impacts	312,750	36.5 %
	Very, Very Low	377,072	44.0 %
	Very Low	60,571	7.1 %
	Low	32,409	3.8 %
	Low-Moderate	33,658	3.9 %
	Moderate	17,890	2.1 %
	Moderate-High	11,084	1.3 %
	High	4,662	0.5 %
	Very High	3,302	0.4 %
	Extreme	4,334	0.5 %
	<b>Total</b>	<b>857,732</b>	<b>100.0 %</b>



### North Tooele Fire District Risk to Drinking Watersheds and Population



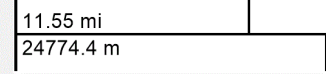




North Tooele Fire District

**Risk to Drinking Watersheds and Population**

- Minimal Direct Wildfire Impacts
- Very, Very Low
- Very Low
- Low
- Low-Moderate
- Moderate
- Moderate-High
- High
- Very High
- Extreme



Utah Wildfire Risk Assessment  
[wildfirerisk.utah.gov](http://wildfirerisk.utah.gov)

# Burn Probability

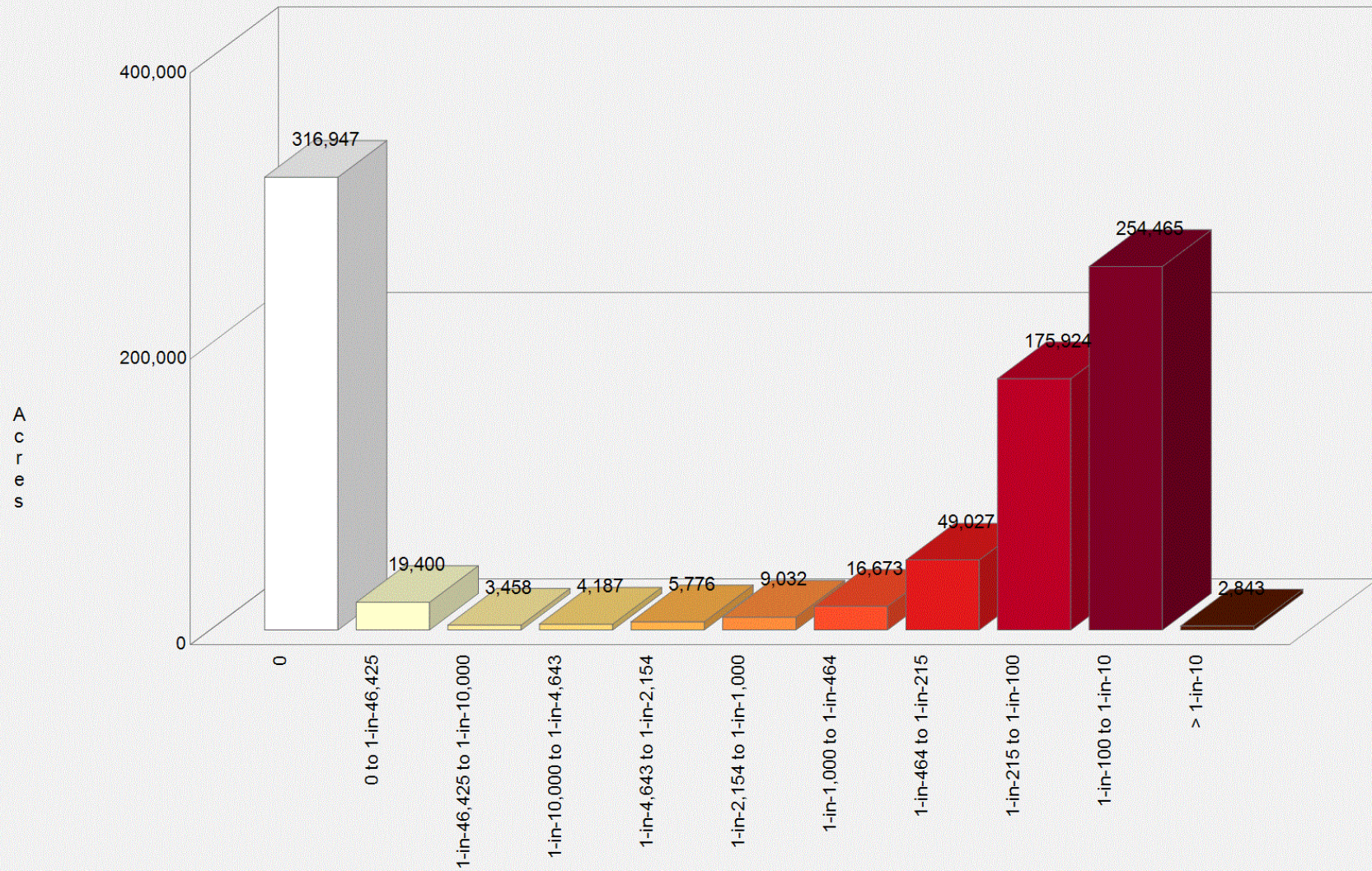
Burn probability is the annual probability of wildfire burning in a specific location. At the community level, burn probability or wildfire likelihood is averaged where housing units occur. Burn Probability is based on fire behavior modeling across thousands of simulations of possible fire seasons. In each simulation, factors contributing to the probability of a fire occurring, including weather, topography, and ignitions are varied based on patterns derived from observations in recent decades.

Burn Probability is not predictive and does not reflect any currently forecasted weather or fire danger conditions. Burn Probability is simply a probability that any specific location (pixel) may experience wildfire in any given year. It does not say anything about the intensity of fire if it occurs.

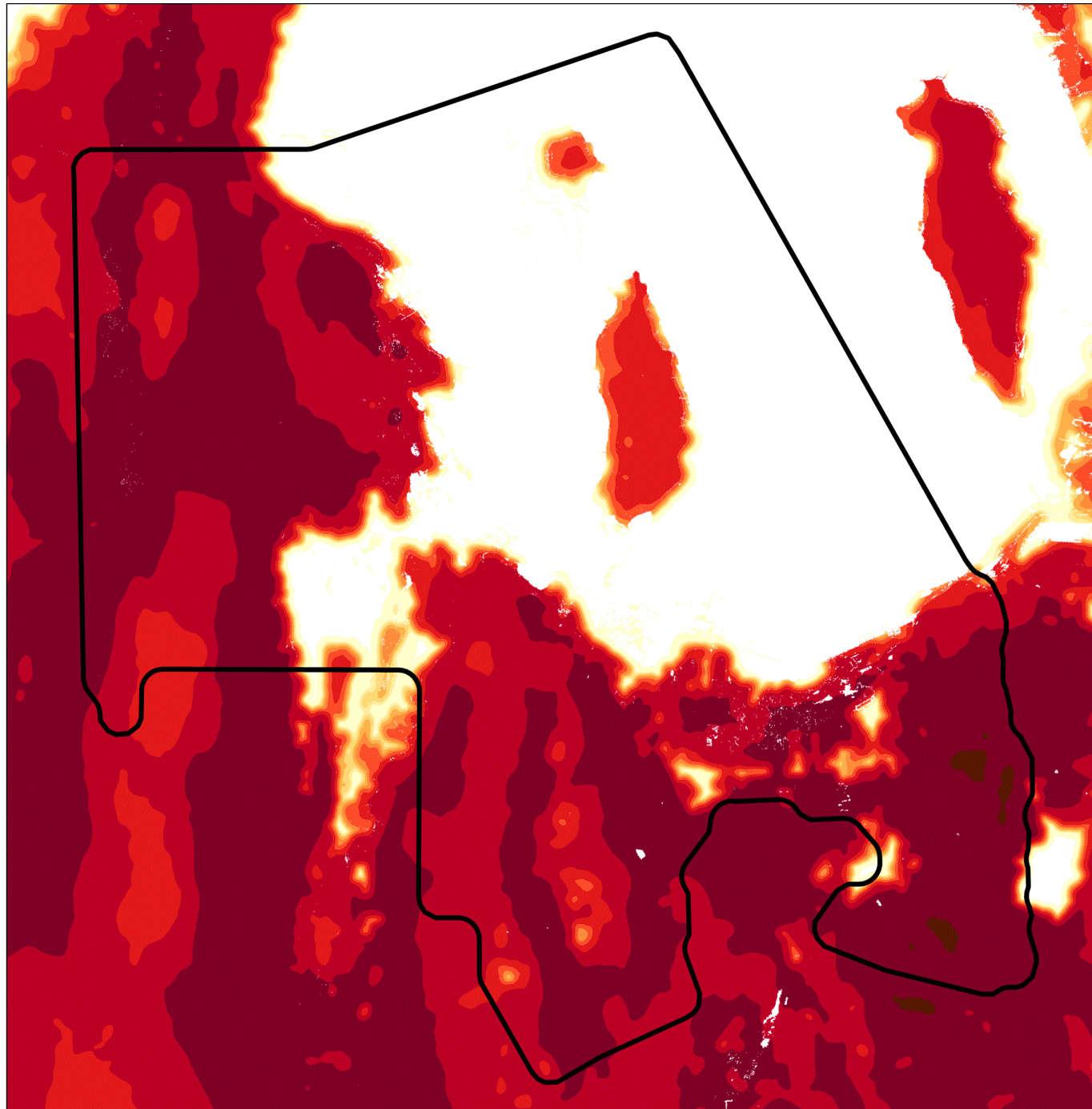
	Burn Probability Category	Acres	Percent
	Minimal Direct Wildfire Impacts	316,947	37.0 %
	0 to 1-in-46,425	19,400	2.3 %
	1-in-46,425 to 1-in-10,000	3,458	0.4 %
	1-in-10,000 to 1-in-4,643	4,187	0.5 %
	1-in-4,643 to 1-in-2,154	5,776	0.7 %
	1-in-2,154 to 1-in-1,000	9,032	1.1 %
	1-in-1,000 to 1-in-464	16,673	1.9 %
	1-in-464 to 1-in-215	49,027	5.7 %
	1-in-215 to 1-in-100	175,924	20.5 %
	1-in-100 to 1-in-10	254,465	29.7 %
	> 1-in-10	2,843	0.3 %
	<b>Total</b>	<b>857,732</b>	<b>100.0 %</b>



### North Tooele Fire District Burn Probability



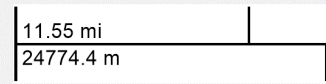




North Tooele Fire District

**Burn Probability**

- 0
- 0 to 1-in-46,425
- 1-in-46,425 to 1-in-10,000
- 1-in-10,000 to 1-in-4,643
- 1-in-4,643 to 1-in-2,154
- 1-in-2,154 to 1-in-1,000
- 1-in-1,000 to 1-in-464
- 1-in-464 to 1-in-215
- 1-in-215 to 1-in-100
- 1-in-100 to 1-in-10
- > 1-in-10



Utah Wildfire Risk Assessment  
[wildfirerisk.utah.gov](http://wildfirerisk.utah.gov)



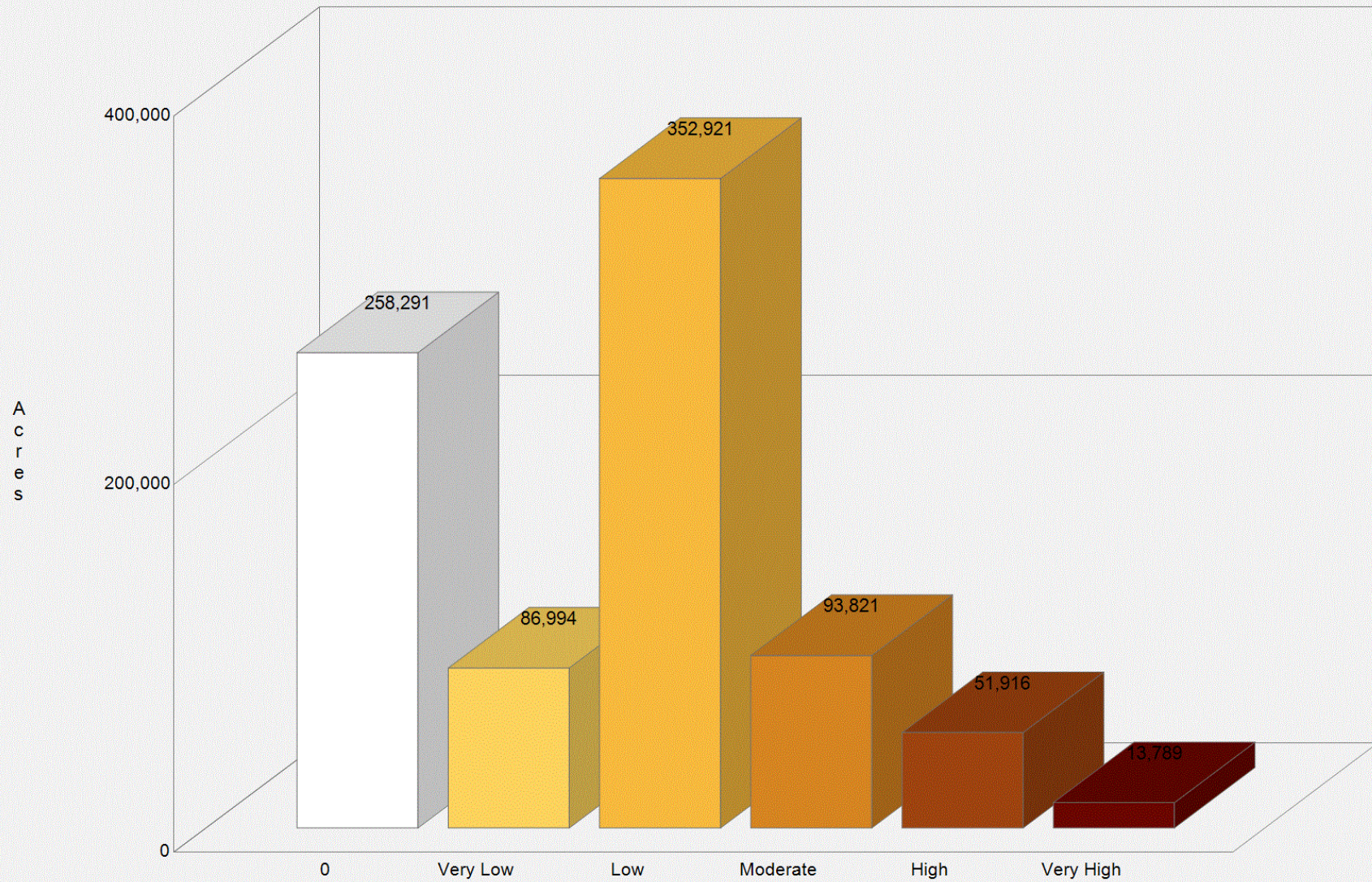
# Damage Potential

Damage Potential (DP) represents the potential consequences of fire to a home at a given location if a fire were to occur and if a home were located there. DP incorporates ember load and conditional risk to potential structures as a generalized measure of potential loss to homes.

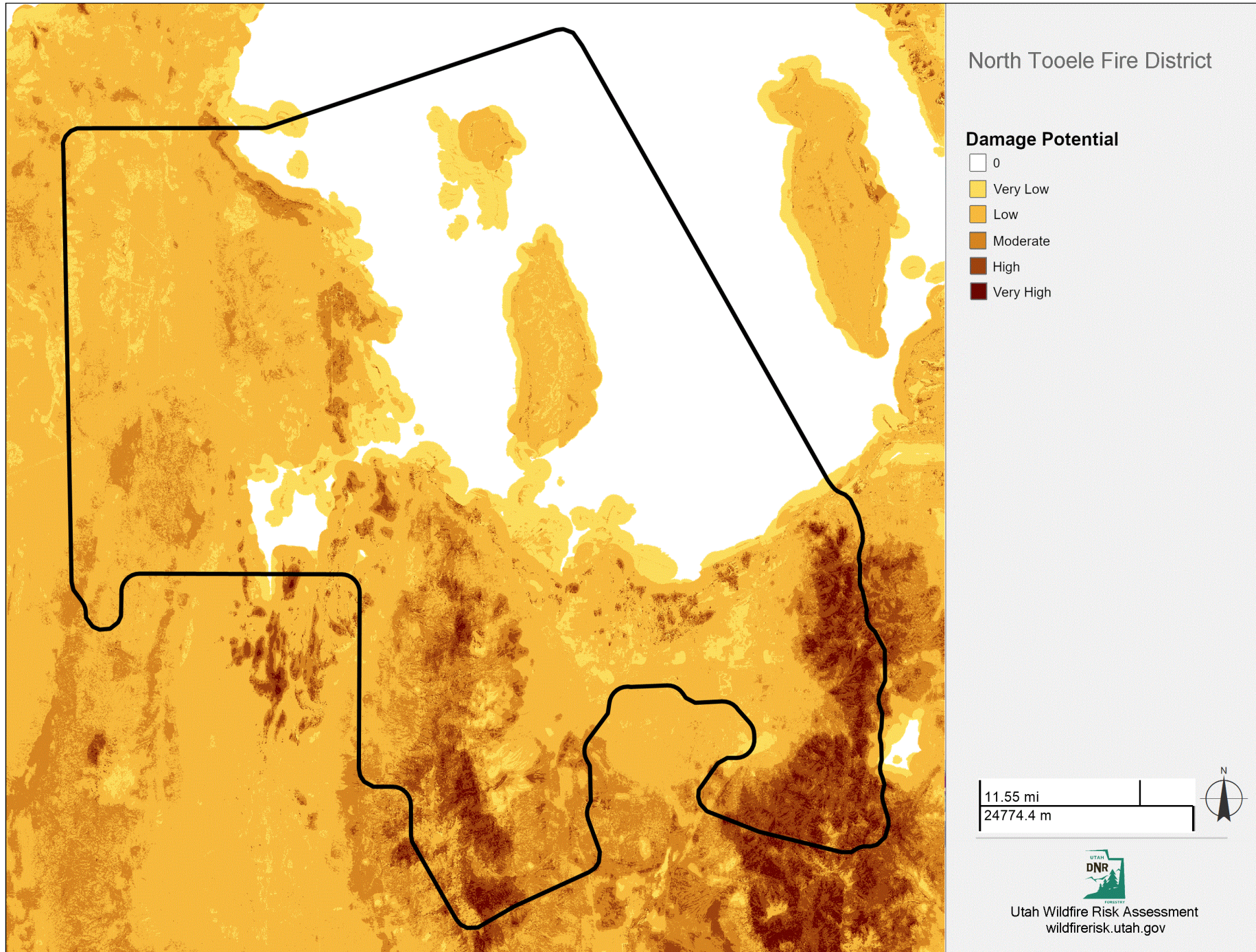
	Damage Potential Category	Acres	Percent
	Minimal Direct Wildfire Impacts	258,291	30.1 %
	Very Low	86,994	10.1 %
	Low	352,921	41.1 %
	Moderate	93,821	10.9 %
	High	51,916	6.1 %
	Very High	13,789	1.6 %
	<b>Total</b>	<b>857,732</b>	<b>100.0 %</b>



### North Tooele Fire District Damage Potential









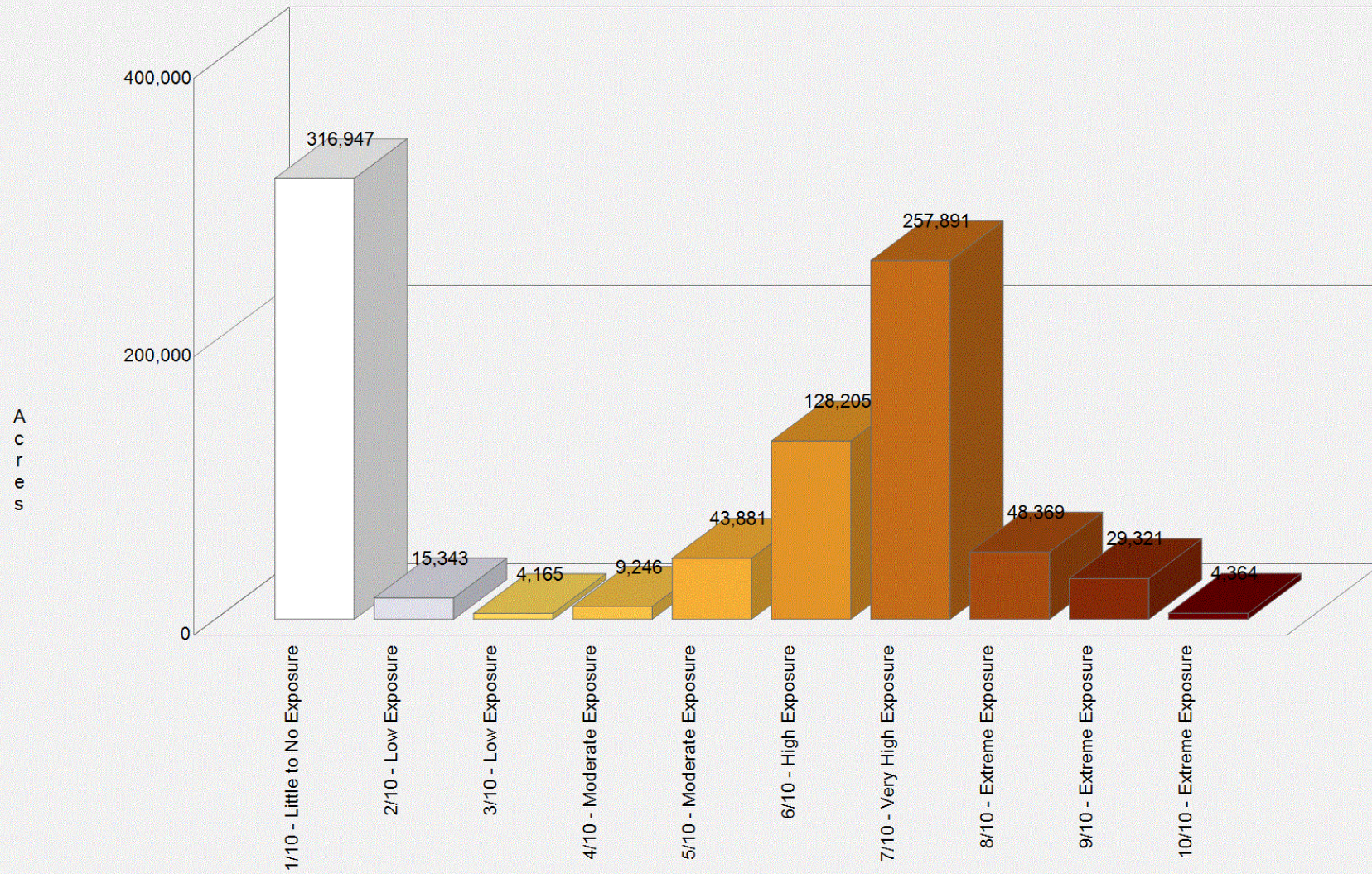
## Structure Exposure Score

Structure Exposure Score (SES) combines wildfire likelihood (burn probability) and consequence (represented by Damage Potential) assuming a home is present on every pixel. SES is analogous to the Risk to Potential Structures dataset but includes ember load.

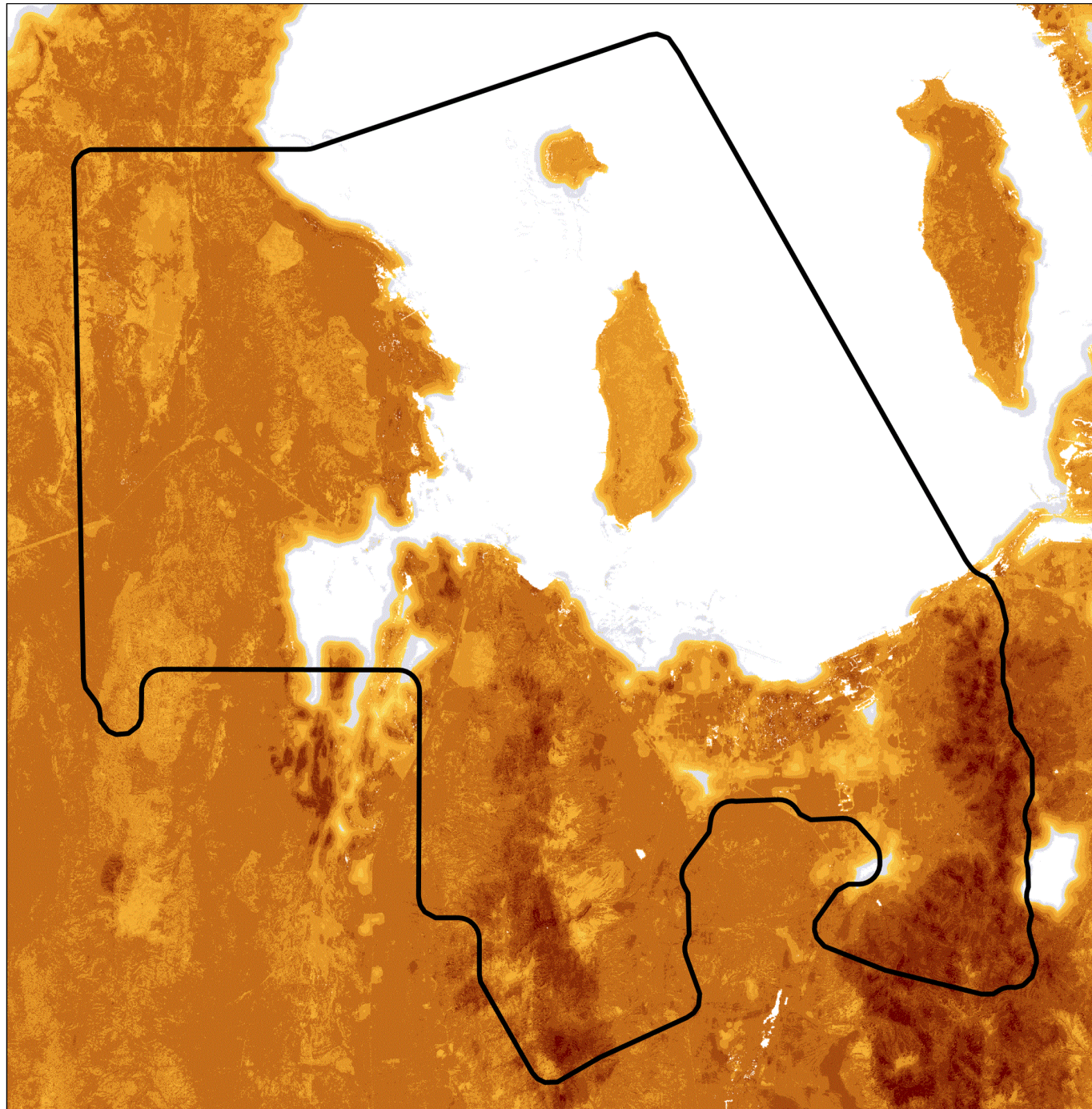
	Structure Exposure Score Category	Acres	Percent
	1/10 - Little to No Exposure	316,947	37.0 %
	2/10 - Low Exposure	15,343	1.8 %
	3/10 - Low Exposure	4,165	0.5 %
	4/10 - Moderate Exposure	9,246	1.1 %
	5/10 - Moderate Exposure	43,881	5.1 %
	6/10 - High Exposure	128,205	14.9 %
	7/10 - Very High Exposure	257,891	30.1 %
	8/10 - Extreme Exposure	48,369	5.6 %
	9/10 - Extreme Exposure	29,321	3.4 %
	10/10 - Extreme Exposure	4,364	0.5 %
	<b>Total</b>	<b>857,732</b>	<b>100.0 %</b>



### North Tooele Fire District Structure Exposure Score



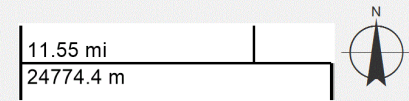




## North Tooele Fire District

### Structure Exposure Score

- 1/10 - Little to No Exposure
- 2/10 - Low Exposure
- 3/10 - Low Exposure
- 4/10 - Moderate Exposure
- 5/10 - Moderate Exposure
- 6/10 - High Exposure
- 7/10 - Very High Exposure
- 8/10 - Extreme Exposure
- 9/10 - Extreme Exposure
- 10/10 - Extreme Exposure



Utah Wildfire Risk Assessment  
[wildfirerisk.utah.gov](http://wildfirerisk.utah.gov)

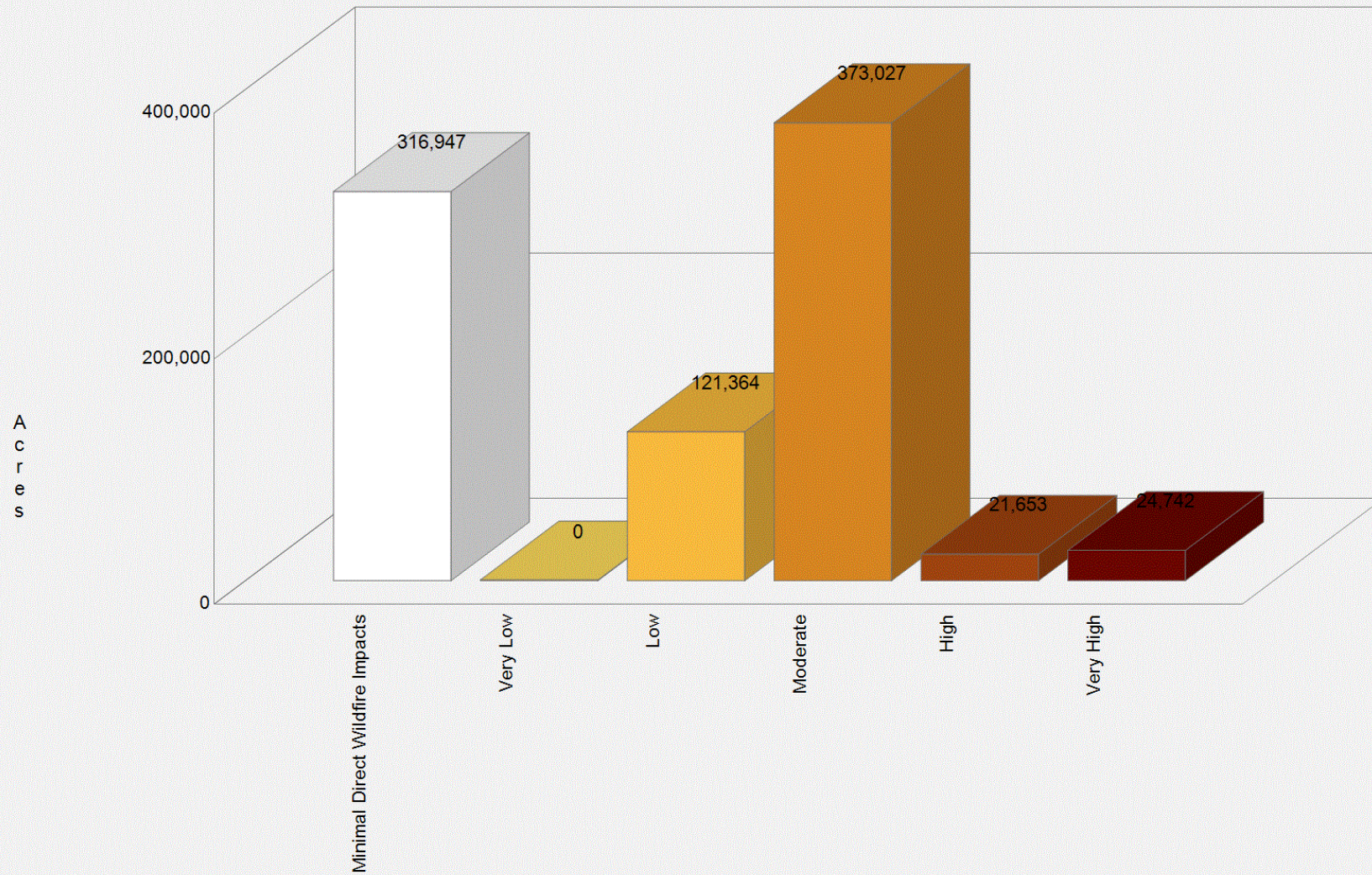
# Conditional Risk to Potential Structures

The conditional risk to potential structures (cRPS) dataset or “Risk to Homes” represents the potential consequences of fire to a home at a given location, if a fire occurs there and if a home were located there. It is a measure that integrates wildfire intensity with generalized consequences to a home on every pixel, but does not account for the actual probability of fire occurrence.

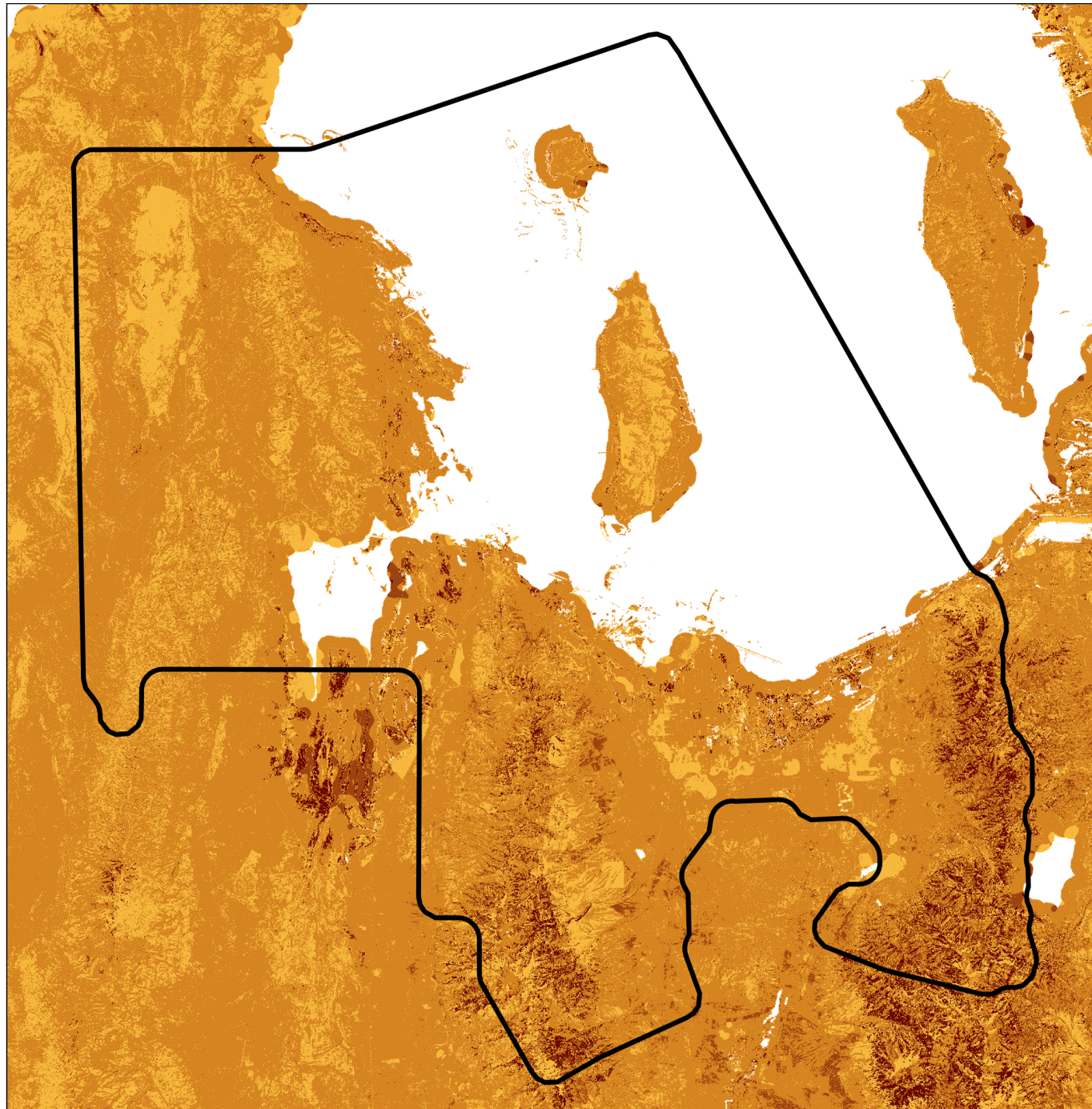
	Conditional Risk to Potential Structures Category	Acres	Percent
	Minimal Direct Wildfire Impacts	316,947	37.0 %
	Very Low	0	0.0 %
	Low	121,364	14.1 %
	Moderate	373,027	43.5 %
	High	21,653	2.5 %
	Very High	24,742	2.9 %
	<b>Total</b>	<b>857,733</b>	<b>100.0 %</b>



### North Tooele Fire District Conditional Risk to Potential Structures



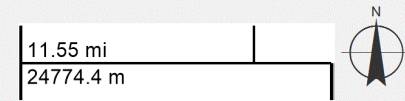




North Tooele Fire District

**Conditional Risk to Potential Structures**

- Minimal Direct Wildfire Impacts
- Very Low
- Low
- Moderate
- High
- Very High

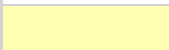







Utah Wildfire Risk Assessment  
wildfirerisk.utah.gov



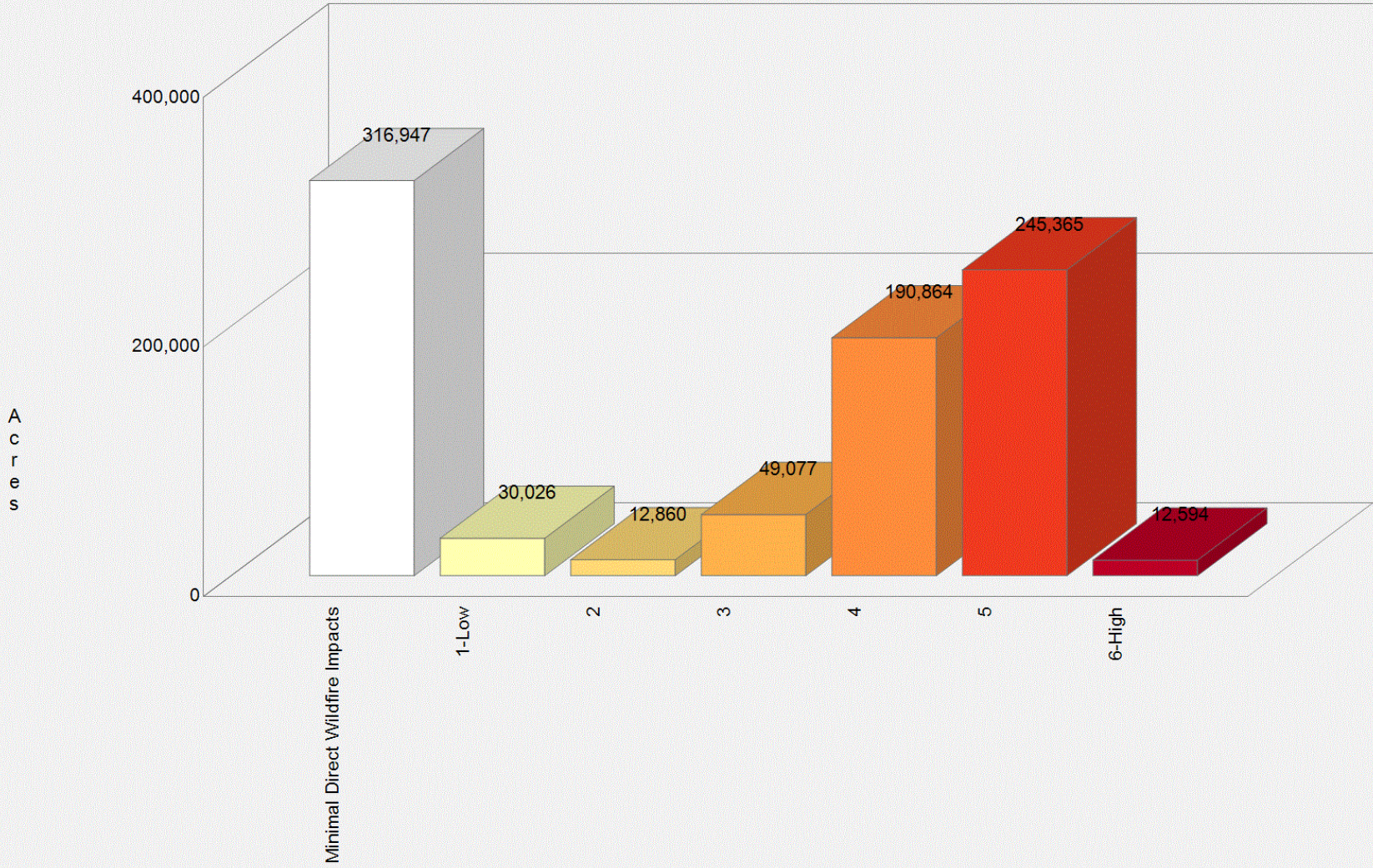
# Risk to Potential Structures

The expected risk to potential structures (RPS) dataset represents a measure that integrates wildfire likelihood and intensity with generalized consequences to a home on every pixel. For every place on the landscape, it poses the hypothetical question, "What would be the relative risk to a house if one existed here?" This allows comparison of wildfire risk in places where homes already exist to places where new construction may be proposed.

	Risk to Potential Structures Category	Acres	Percent
	Minimal Direct Wildfire Impacts	316,947	37.0 %
	1-Low	30,026	3.5 %
	2	12,860	1.5 %
	3	49,077	5.7 %
	4	190,864	22.3 %
	5	245,365	28.6 %
	6-High	12,594	1.5 %
	<b>Total</b>	<b>857,733</b>	<b>100.0 %</b>




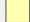
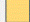




### North Tooele Fire District Risk to Potential Structures





# North Tooele Fire District

## Risk to Potential Structures

-  Minimal Direct Wildfire Impacts
-  1-Low
-  2
-  3
-  4
-  5
-  6-High

11.55 mi  
24774.4 m



Utah Wildfire Risk Assessment  
wildfirerisk.utah.gov

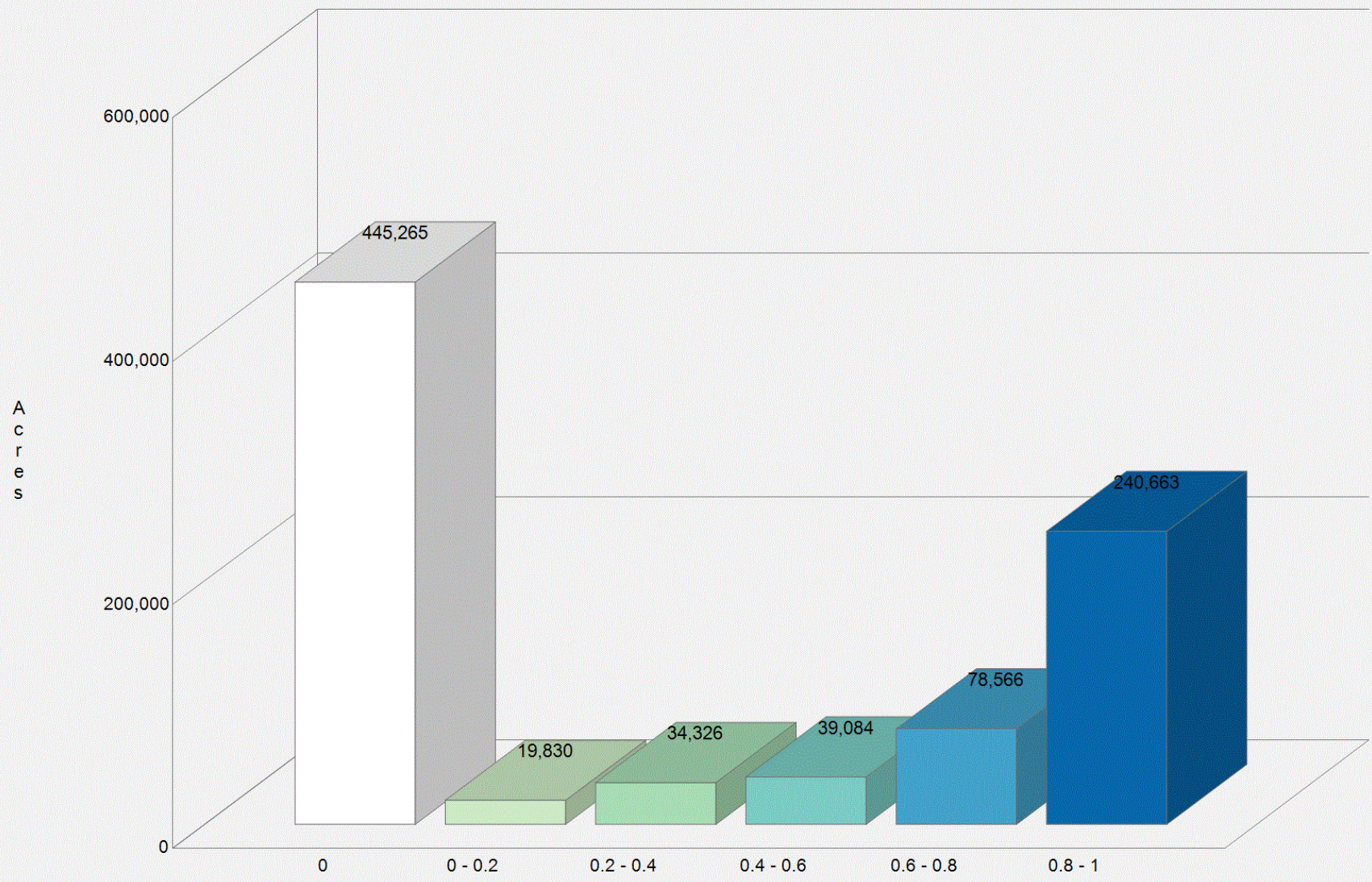
# Probability of Exceeding Manual Control

This dataset represents the probability of heading flame lengths exceeding 4 feet, which is generally considered the threshold for exceeding the possibility of manual control during fire operations.

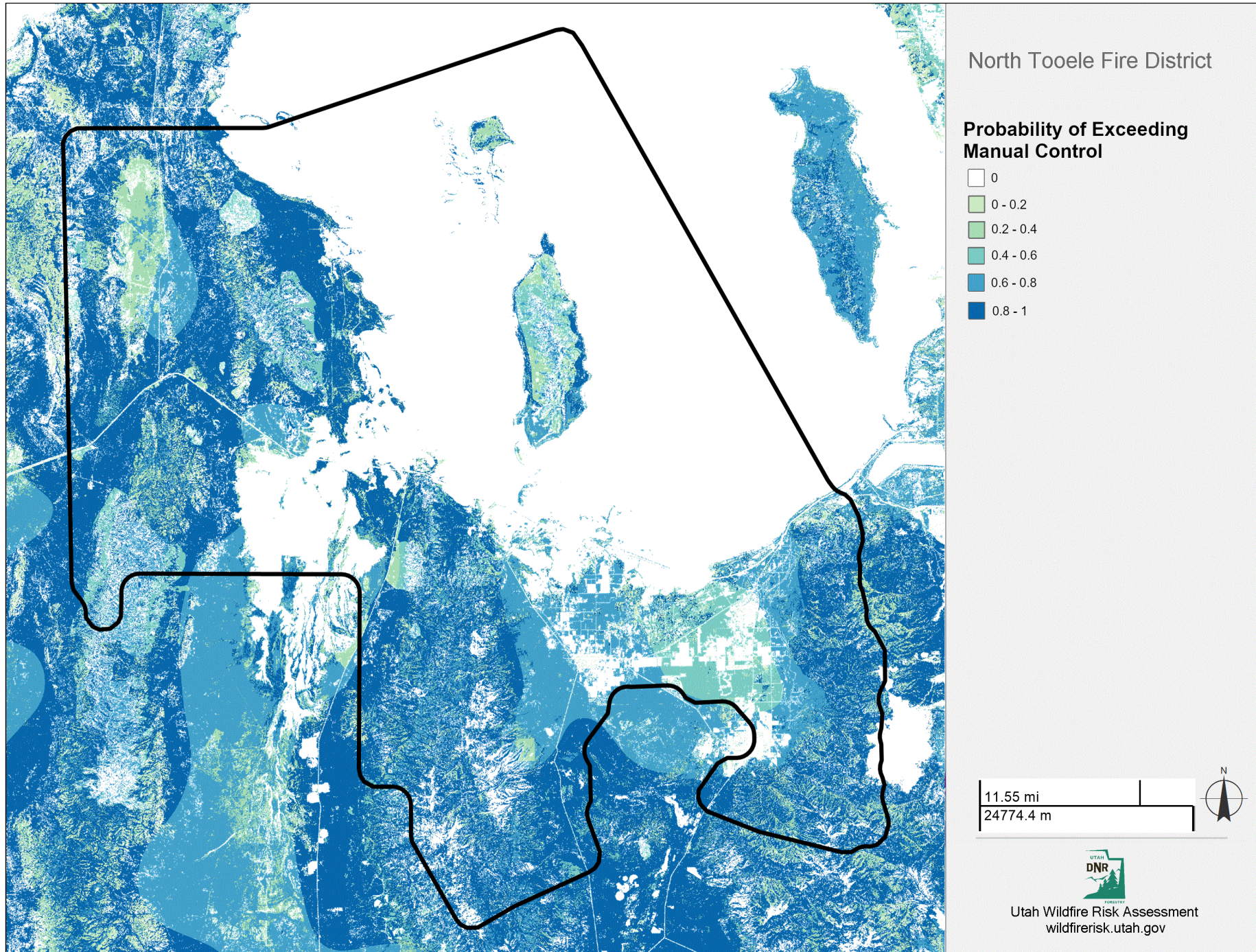
	Probability of Exceeding Manual Control Category	Acres	Percent
	0	445,265	51.9 %
	0 - 0.2	19,830	2.3 %
	0.2 - 0.4	34,326	4.0 %
	0.4 - 0.6	39,084	4.6 %
	0.6 - 0.8	78,566	9.2 %
	0.8 - 1	240,663	28.1 %
	<b>Total</b>	<b>857,734</b>	<b>100.0 %</b>



### North Tooele Fire District Probability of Exceeding Manual Control









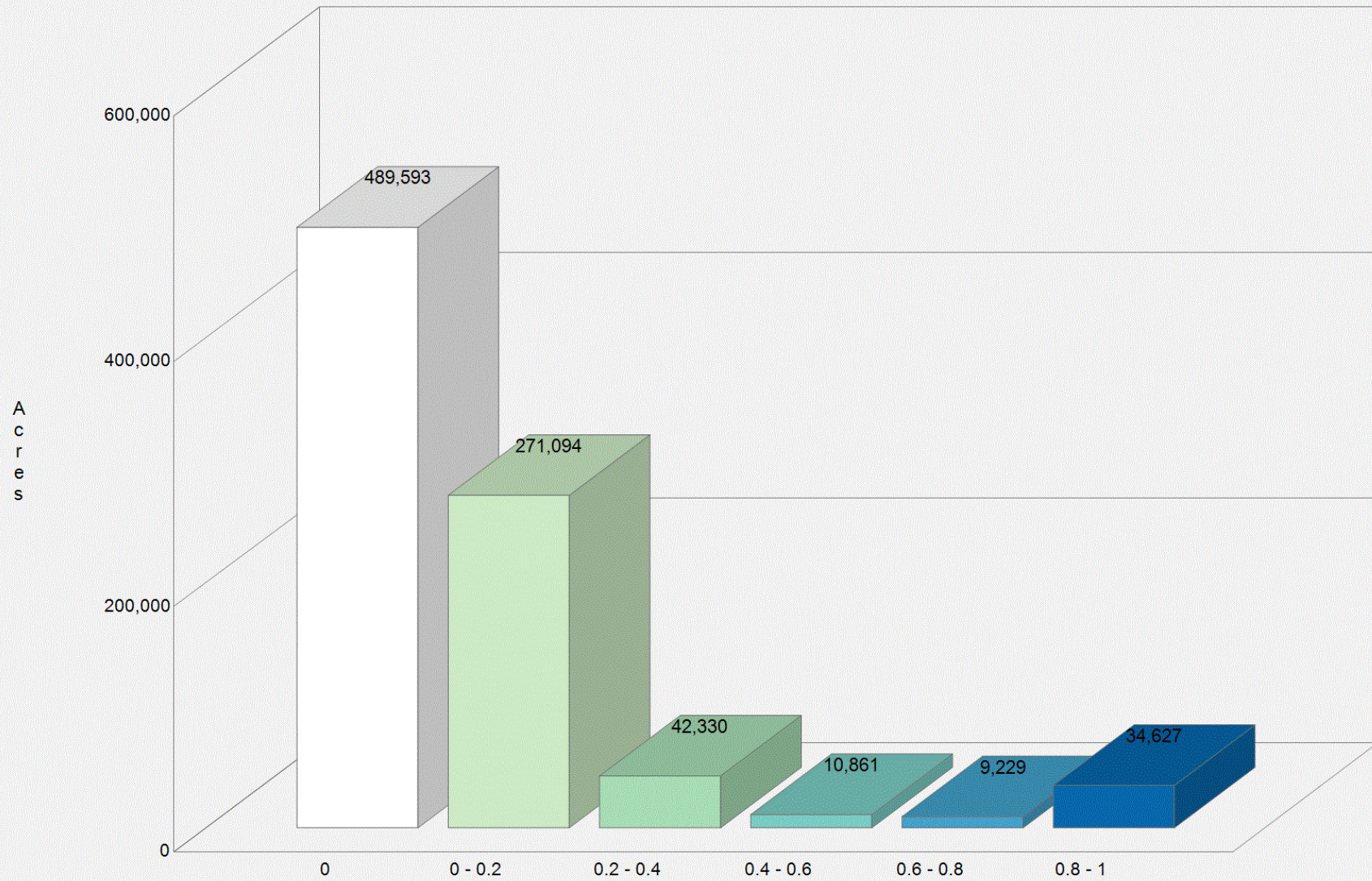
# Probability of Exceeding Mechanical Control

This dataset represents the probability of heading flame lengths exceeding 8 feet, which is generally considered the threshold for exceeding the possibility of mechanical control during fire operations.

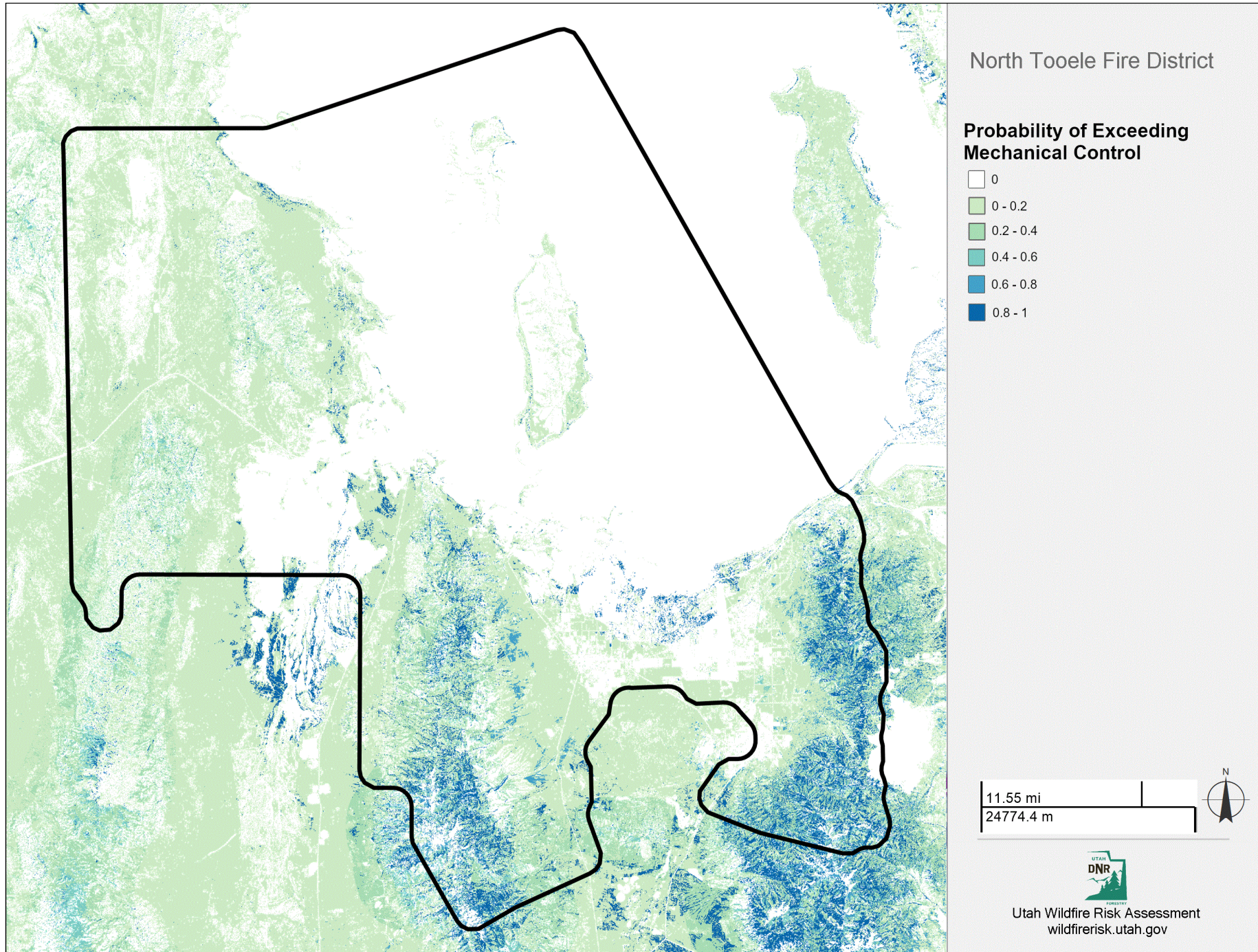
	Probability of Exceeding Mechanical Control Category	Acres	Percent
	0	489,593	57.1 %
	0 - 0.2	271,094	31.6 %
	0.2 - 0.4	42,330	4.9 %
	0.4 - 0.6	10,861	1.3 %
	0.6 - 0.8	9,229	1.1 %
	0.8 - 1	34,627	4.0 %
	<b>Total</b>	<b>857,734</b>	<b>100.0 %</b>



North Tooele Fire District  
Probability of Exceeding Mechanical Control









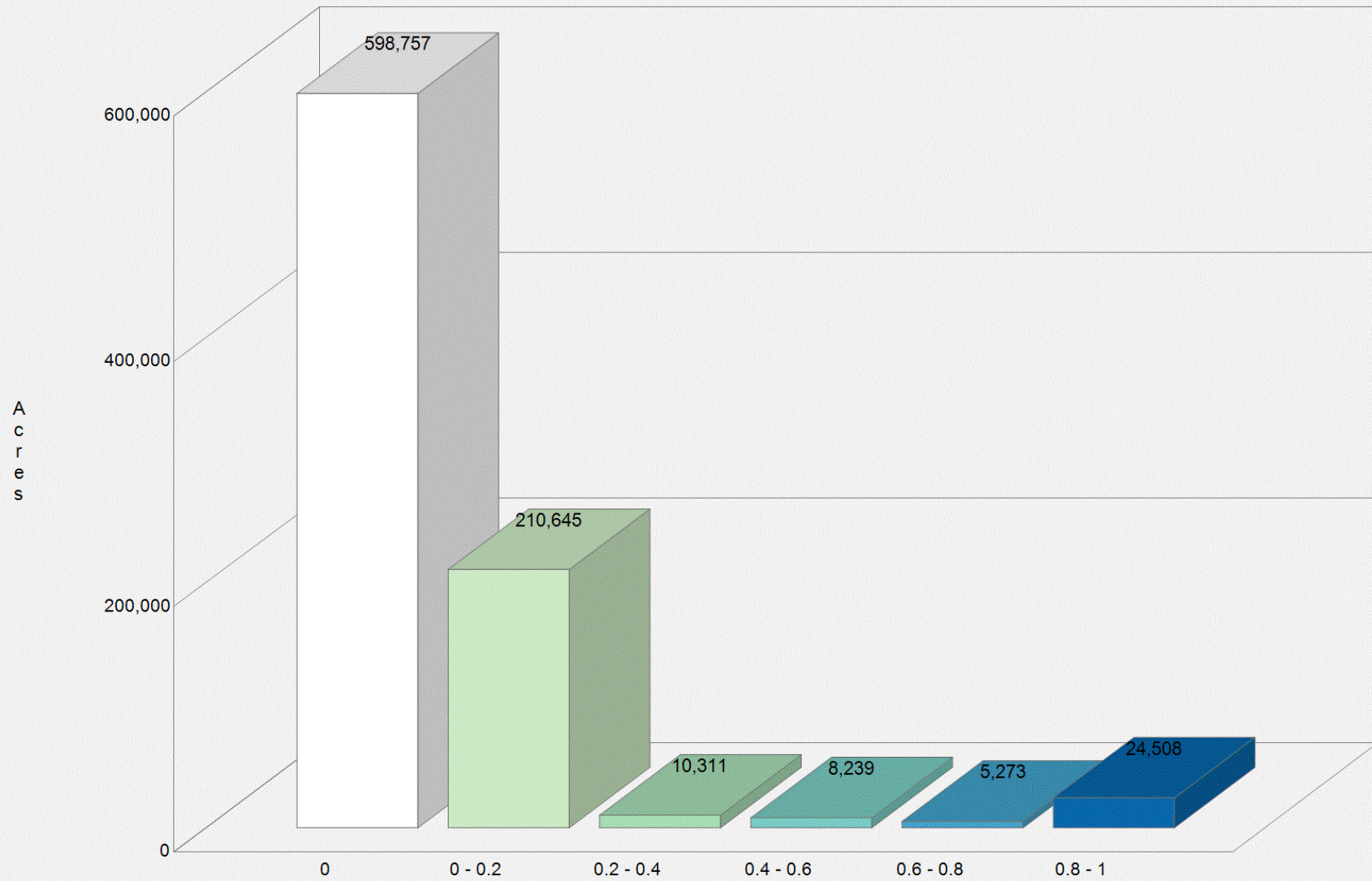
# Probability of Extreme Fire Behavior

This dataset represents the probability of heading flame lengths exceeding 11 feet, which is generally considered the threshold for exceeding extreme fire behavior during fire operations.

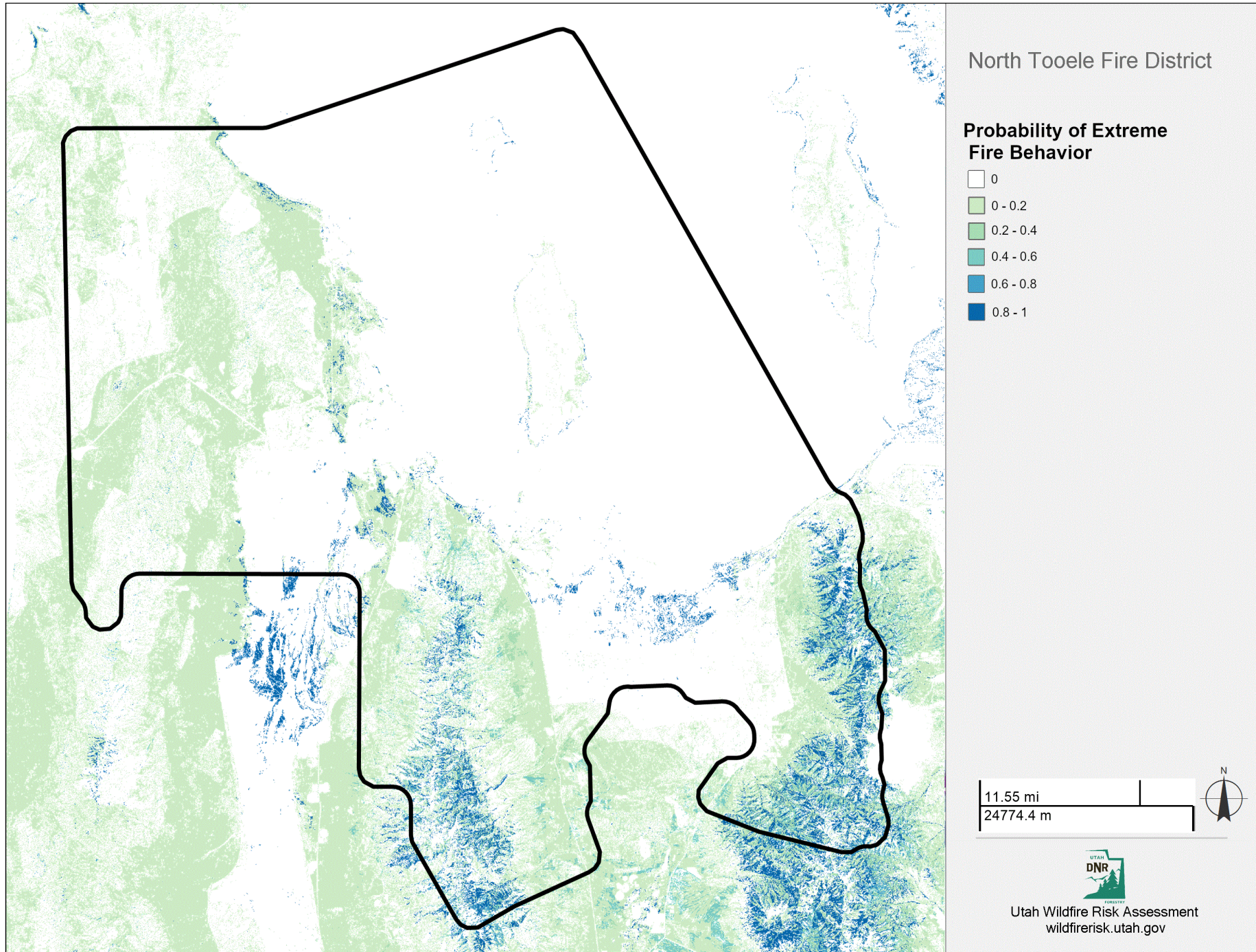
	Probability of Extreme Fire Behavior Category	Acres	Percent
	0	598,757	69.8 %
	0 - 0.2	210,645	24.6 %
	0.2 - 0.4	10,311	1.2 %
	0.4 - 0.6	8,239	1.0 %
	0.6 - 0.8	5,273	0.6 %
	0.8 - 1	24,508	2.9 %
	<b>Total</b>	<b>857,733</b>	<b>100.0 %</b>



### North Tooele Fire District Probability of Extreme Fire Behavior









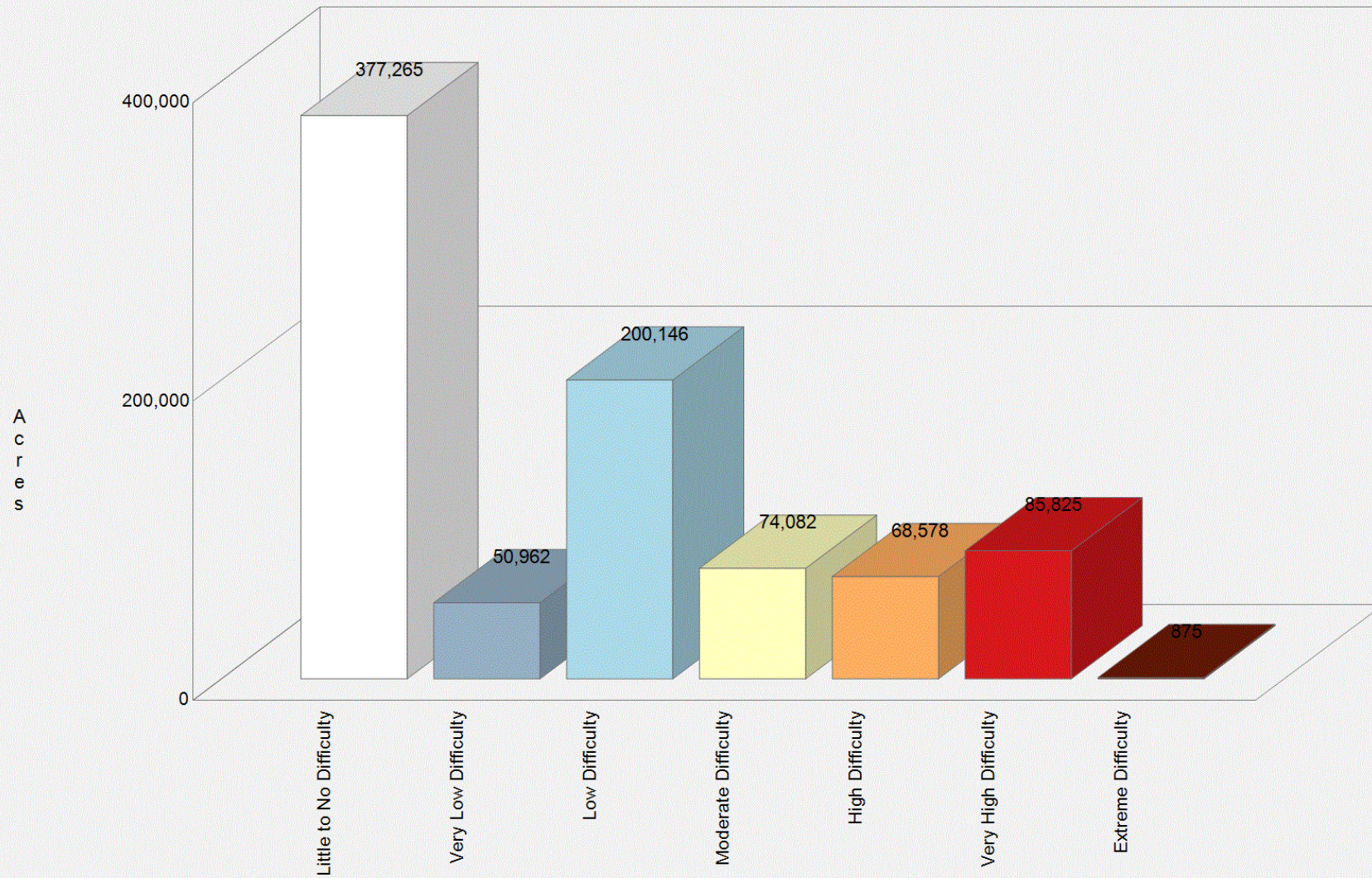
# Suppression Difficulty Index

Wildfire Suppression Difficulty Index (SDI) is a quantitative rating of relative difficulty in performing fire control work. SDI factors in topography, fuels, expected fire behavior under severe fire weather conditions, firefighter line production rates in various fuel types, and accessibility (distance from roads/trails) to assess relative suppression difficulty.

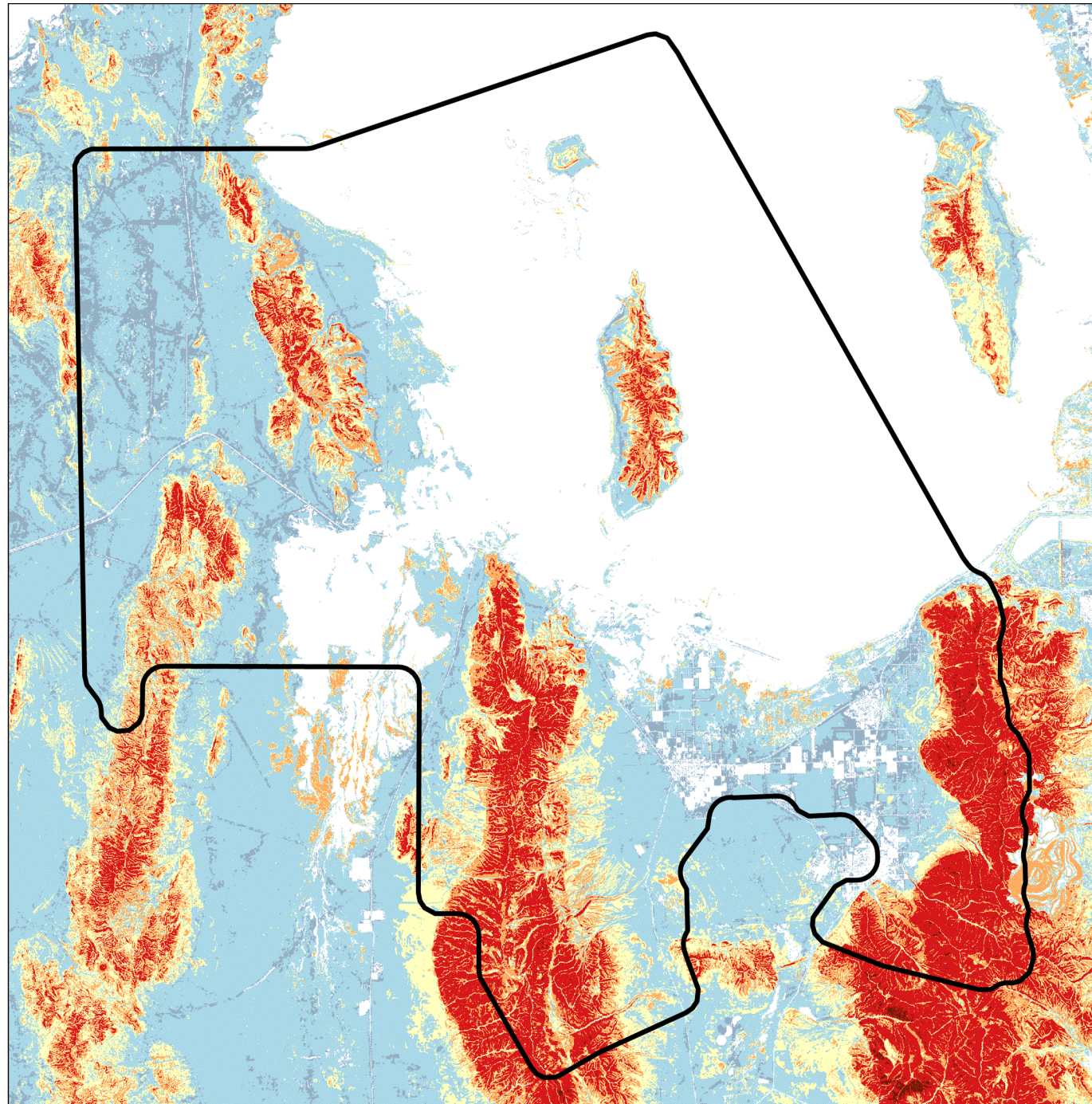
	Suppression Difficulty Index Category	Acres	Percent
	Little to No Difficulty	377,265	44.0 %
	Very Low Difficulty	50,962	5.9 %
	Low Difficulty	200,146	23.3 %
	Moderate Difficulty	74,082	8.6 %
	High Difficulty	68,578	8.0 %
	Very High Difficulty	85,825	10.0 %
	Extreme Difficulty	875	0.1 %
	<b>Total</b>	<b>857,733</b>	<b>100.0 %</b>



### North Tooele Fire District Suppression Difficulty Index







North Tooele Fire District

**Suppression Difficulty Index**

- Little to No Difficulty
- Very Low Difficulty
- Low Difficulty
- Moderate Difficulty
- High Difficulty
- Very High Difficulty
- Extreme Difficulty

11.55 mi  
24774.4 m



Utah Wildfire Risk Assessment  
wildfirerisk.utah.gov



# Flame Length

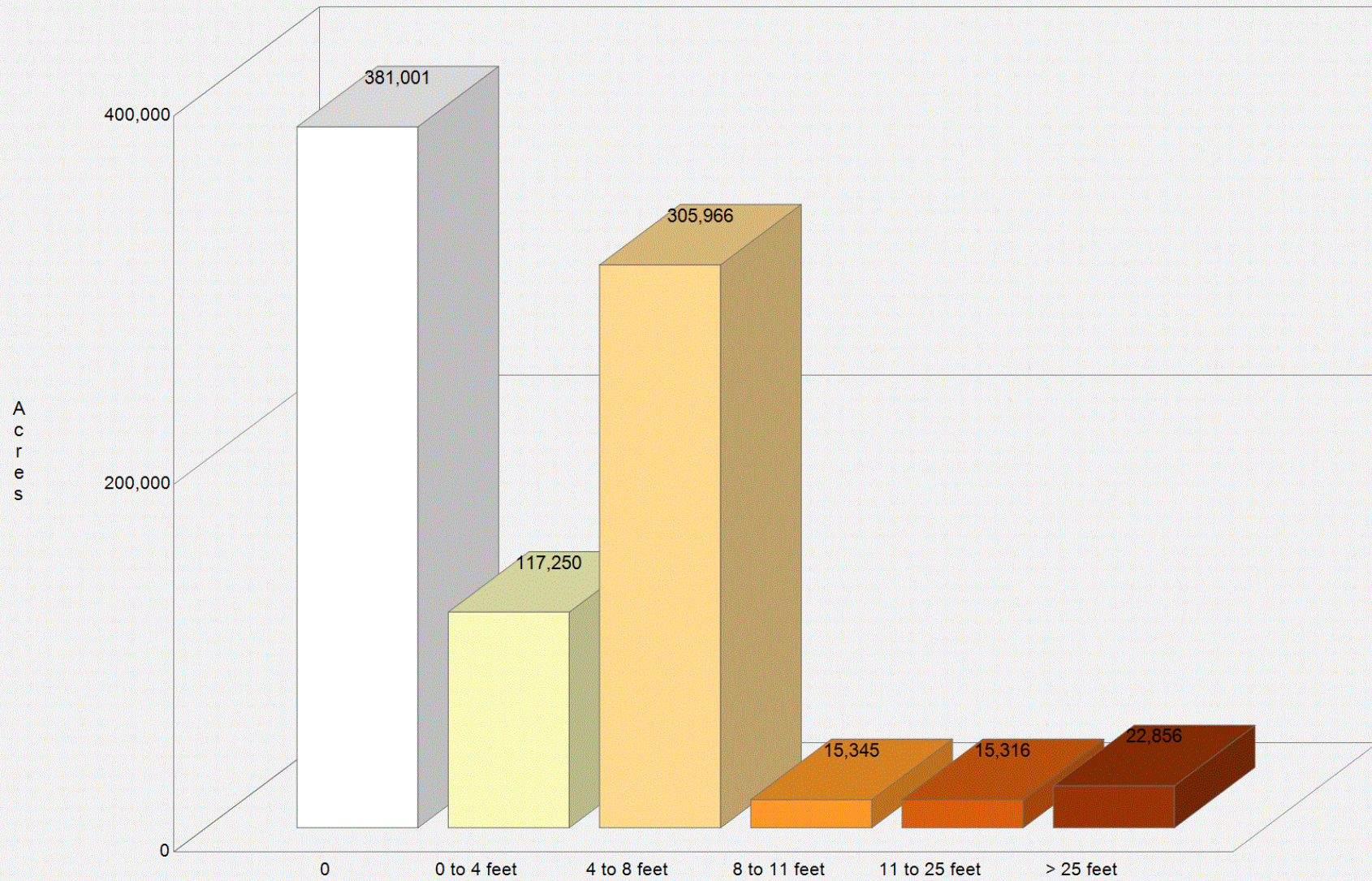
This dataset represents the weighted-average flame length (FL) in feet for a given pixel in the fuelscape (including any contribution of crown fuel). Flame length is the distance (in feet) between the flame tip and the midpoint of the flame depth at the base (generally the ground surface). This is a good indicator of fire intensity. Flame length is a strong indicator of the potential damage to structures; longer flame lengths will likely have a greater negative consequence. Flame lengths are also utilized in fuel-break planning.

	Flame Length Category	Acres	Percent
	0	381,001	44.4 %
	0 to 4 feet	117,250	13.7 %
	4 to 8 feet	305,966	35.7 %
	8 to 11 feet	15,345	1.8 %
	11 to 25 feet	15,316	1.8 %
	> 25 feet	22,856	2.7 %
	<b>Total</b>	<b>857,734</b>	<b>100.0 %</b>

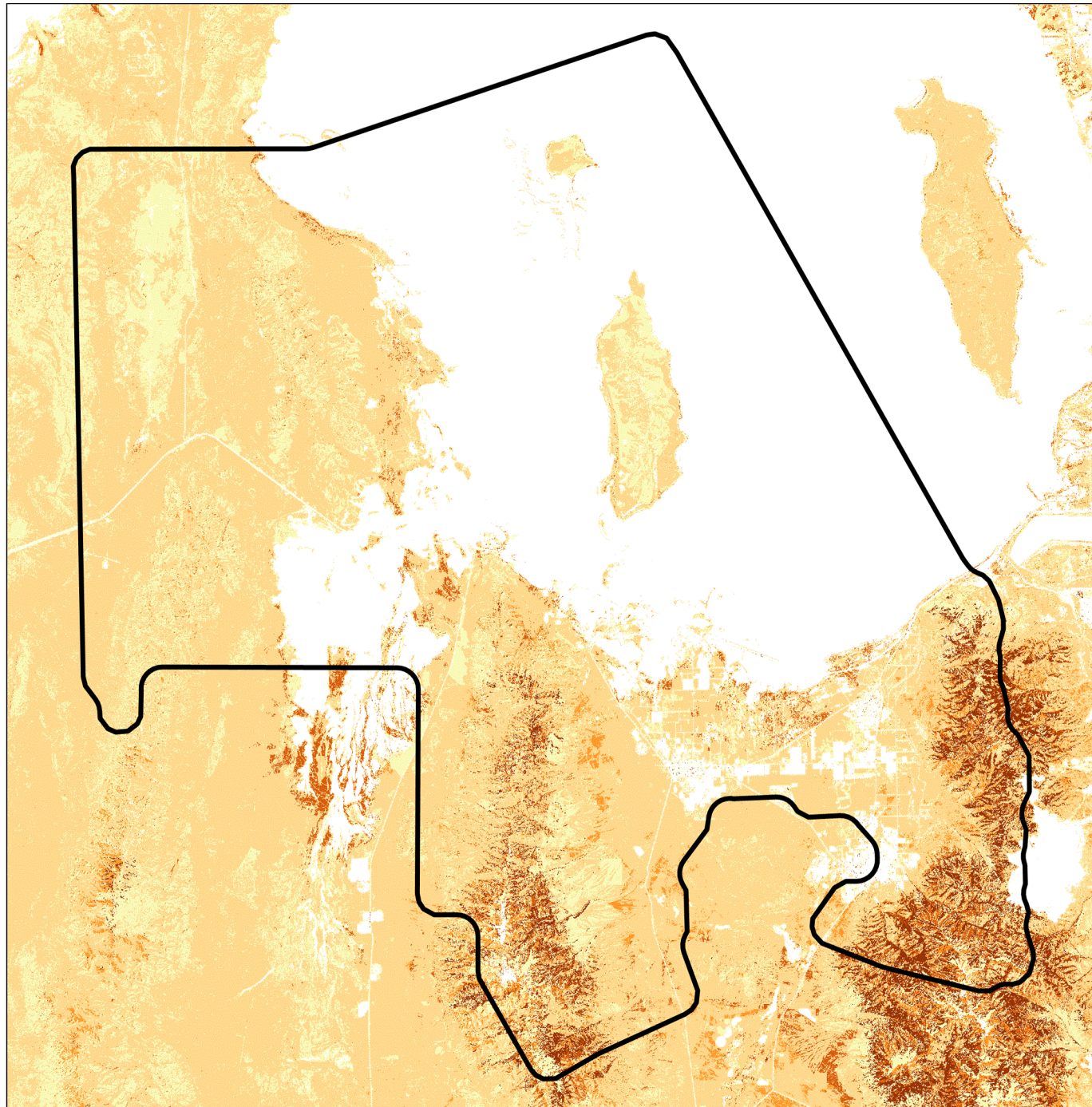




### North Tooele Fire District Flame Length







North Tooele Fire District

Flame Length

- 0
- 0 to 4 feet
- 4 to 8 feet
- 8 to 11 feet
- 11 to 25 feet
- > 25 feet

11.55 mi  
24774.4 m



Utah Wildfire Risk Assessment  
wildfirerisk.utah.gov



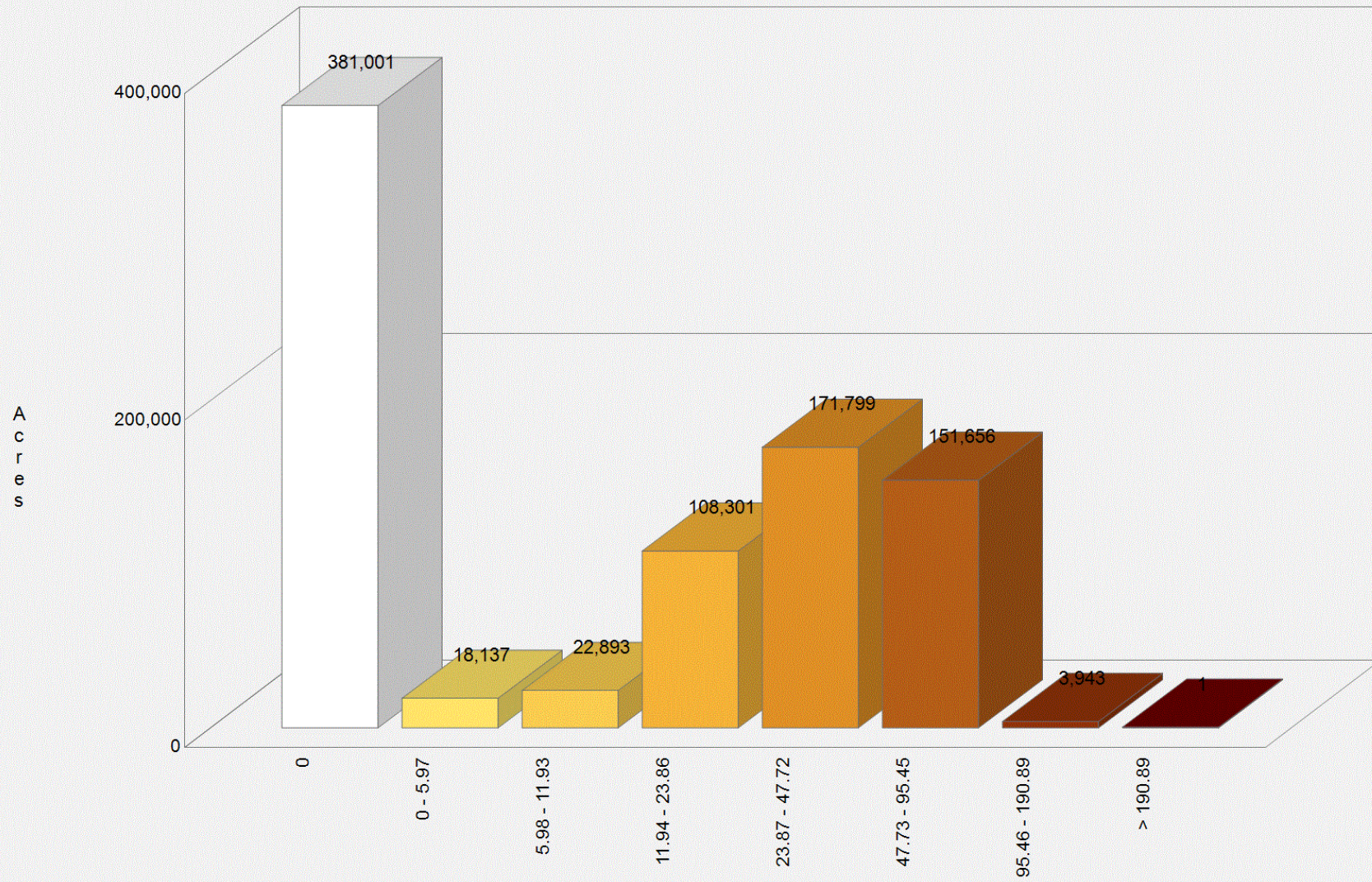
# Rate of Spread (chains/hr)

Rate of Spread (ROS) represents the weighted-average rate of spread in chains per hour for a given pixel in the fuelscape (including any contribution of crown fire spread rate). Rate of spread can affect suppression efforts by “outrunning” direct attack and can have an impact on evacuation.

	Rate of Spread Category (chains/hr)	Acres	Percent
	0	381,001	44.4 %
	0 - 5.97	18,137	2.1 %
	5.98 - 11.93	22,893	2.7 %
	11.94 - 23.86	108,301	12.6 %
	23.87 - 47.72	171,799	20.0 %
	47.73 - 95.45	151,656	17.7 %
	95.46 - 190.89	3,943	0.5 %
	> 190.89	1	0.0 %
	<b>Total</b>	<b>857,731</b>	<b>100.0 %</b>



### North Tooele Fire District Rate of Spread



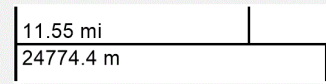




North Tooele Fire District

Rate of Spread (chains/hr)

- 0
- 0 - 5.97
- 5.98 - 11.93
- 11.94 - 23.86
- 23.87 - 47.72
- 47.73 - 95.45
- 95.46 - 190.89
- > 190.89



Utah Wildfire Risk Assessment  
wildfirerisk.utah.gov



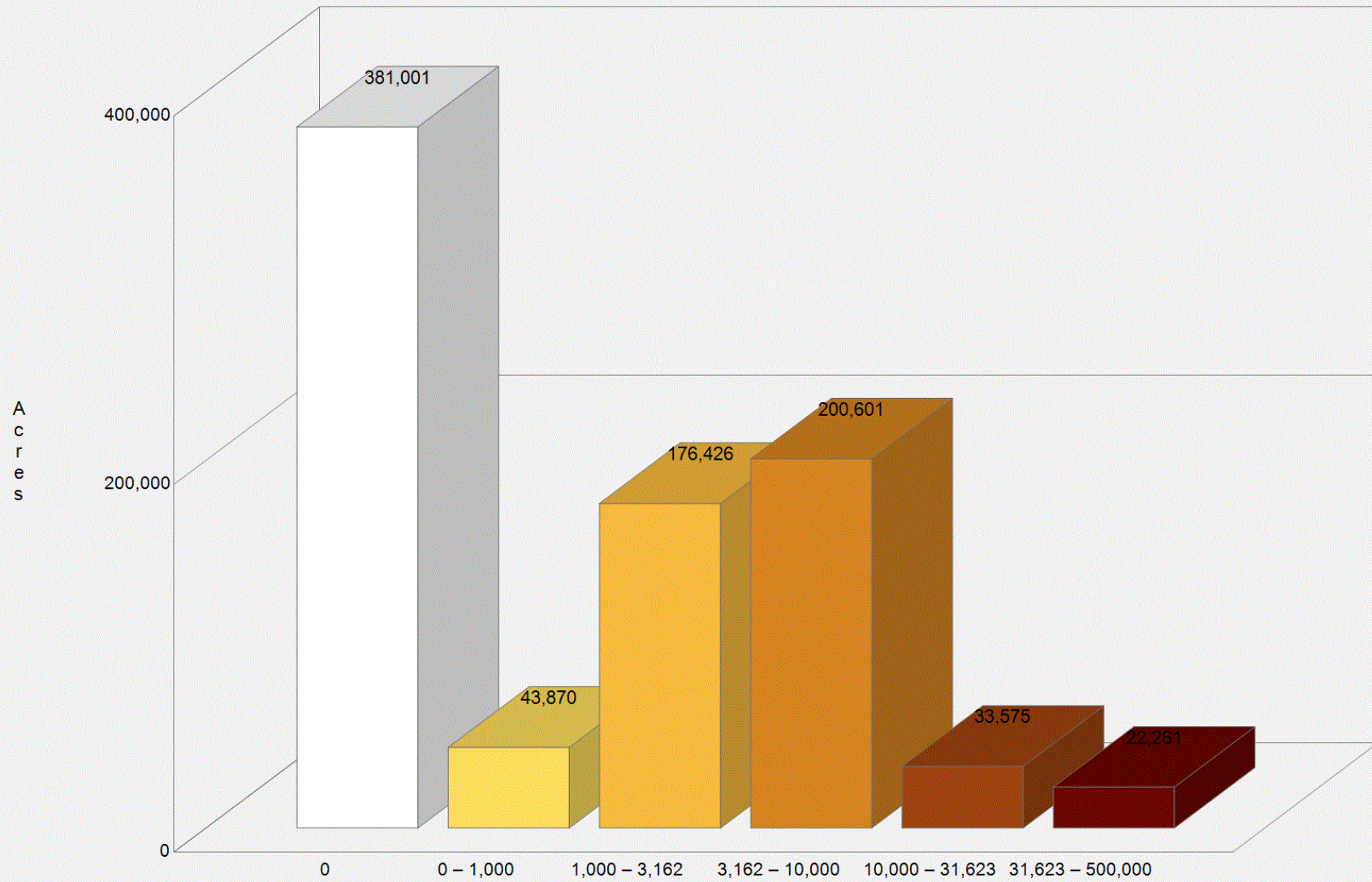
# Heat per Unit Area

This dataset represents the weighted-average heat per unit area (HPA) in kilojoules per square meter for a given pixel in the fuelscape (including any contribution of crown fuel).

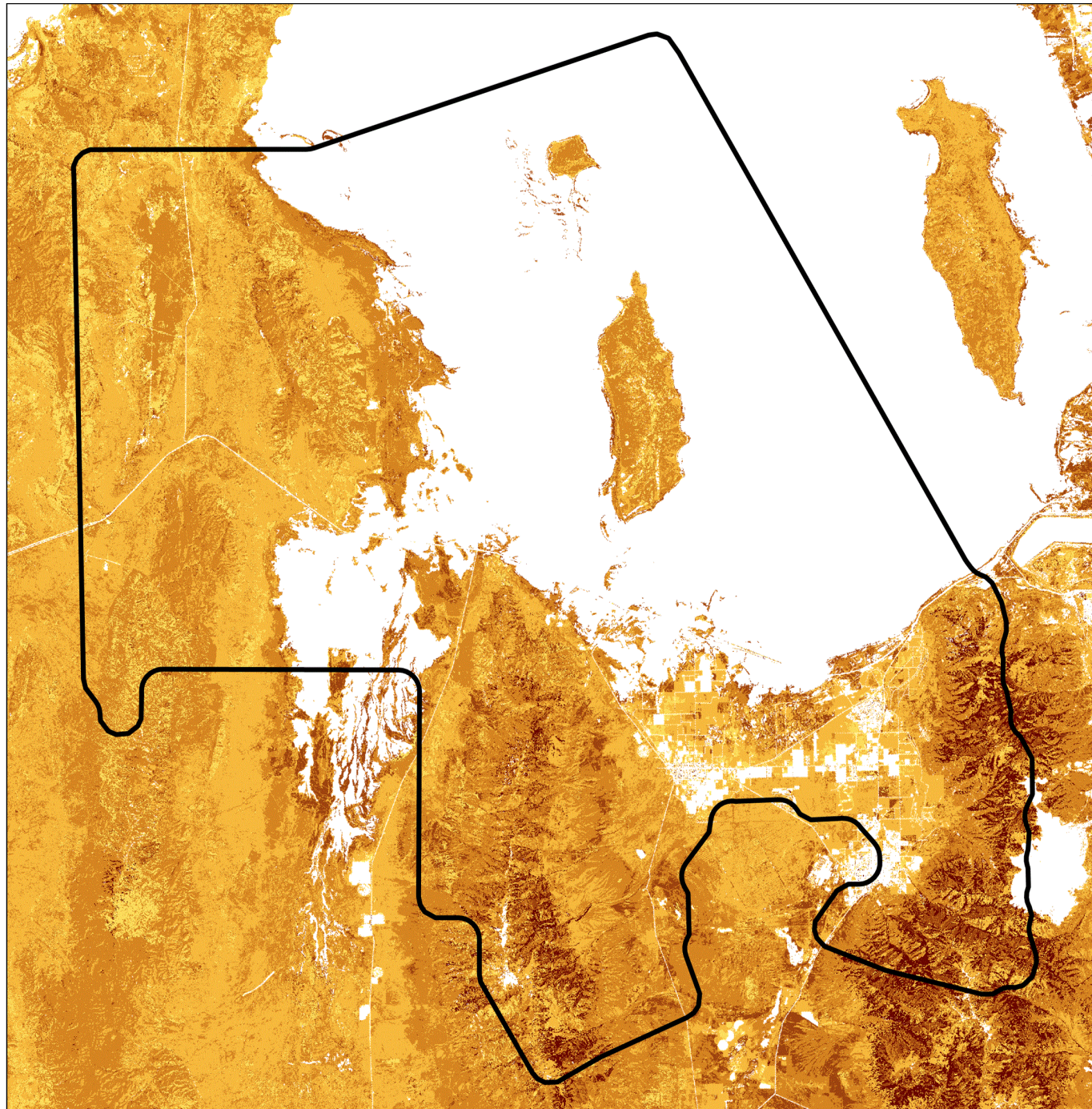
	Heat per Unit Area Category	Acres	Percent
	0	381,001	44.4 %
	0 – 1,000	43,870	5.1 %
	1,000 – 3,162	176,426	20.6 %
	3,162 – 10,000	200,601	23.4 %
	10,000 – 31,623	33,575	3.9 %
	31,623 – 500,000	22,261	2.6 %
	<b>Total</b>	<b>857,734</b>	<b>100.0 %</b>



### North Tooele Fire District Heat per Unit Area



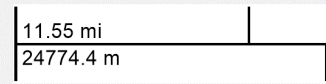




North Tooele Fire District

Heat per Unit Area

- 0
- 0 – 1,000
- 1,000 – 3,162
- 3,162 – 10,000
- 10,000 – 31,623
- 31,623 – 500,000



Utah Wildfire Risk Assessment  
[wildfirerisk.utah.gov](http://wildfirerisk.utah.gov)



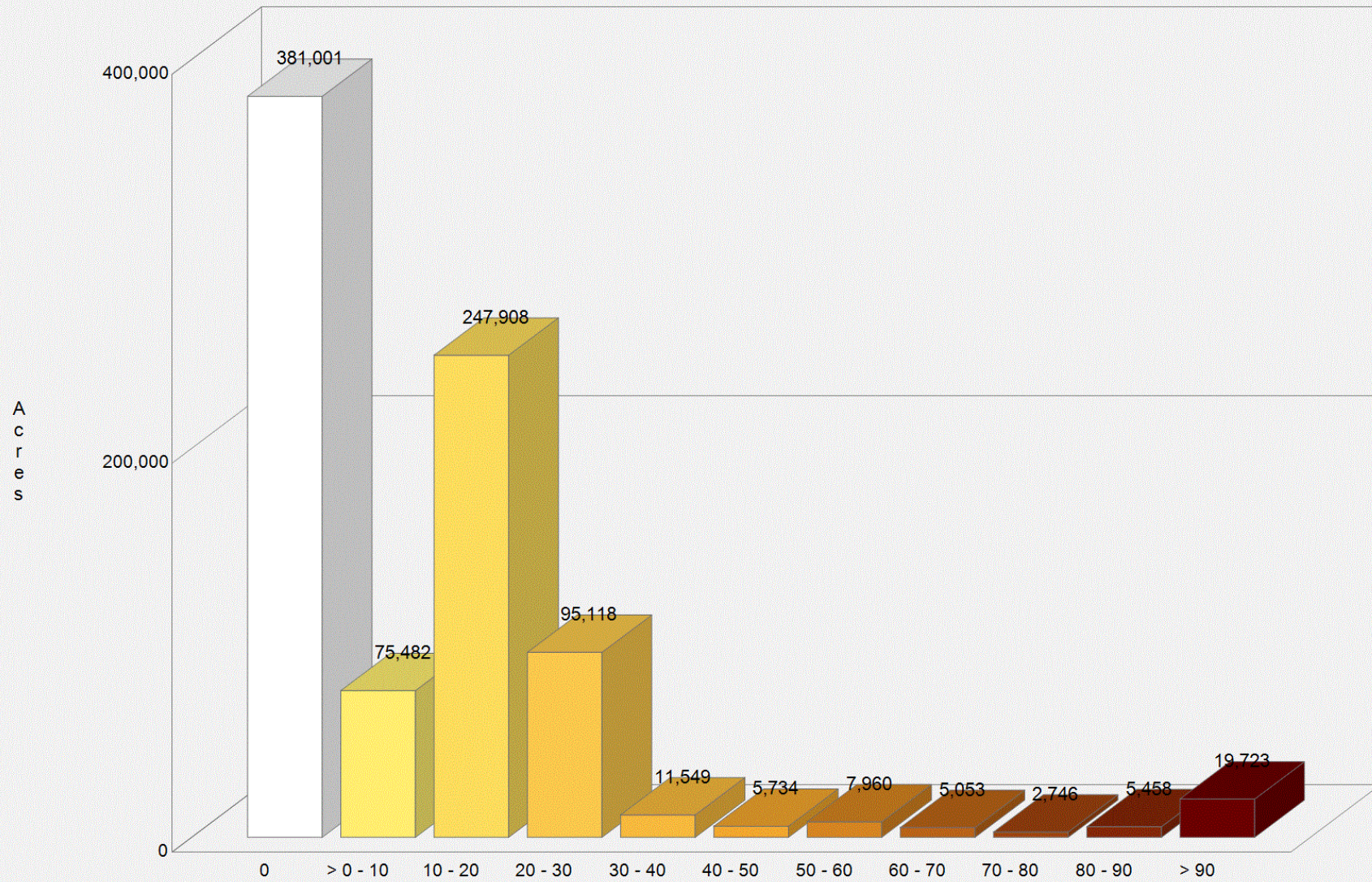
# Conditional Ember Production

This dataset indicates where embers are originating when fires occur (so they could be targeted for treatment).

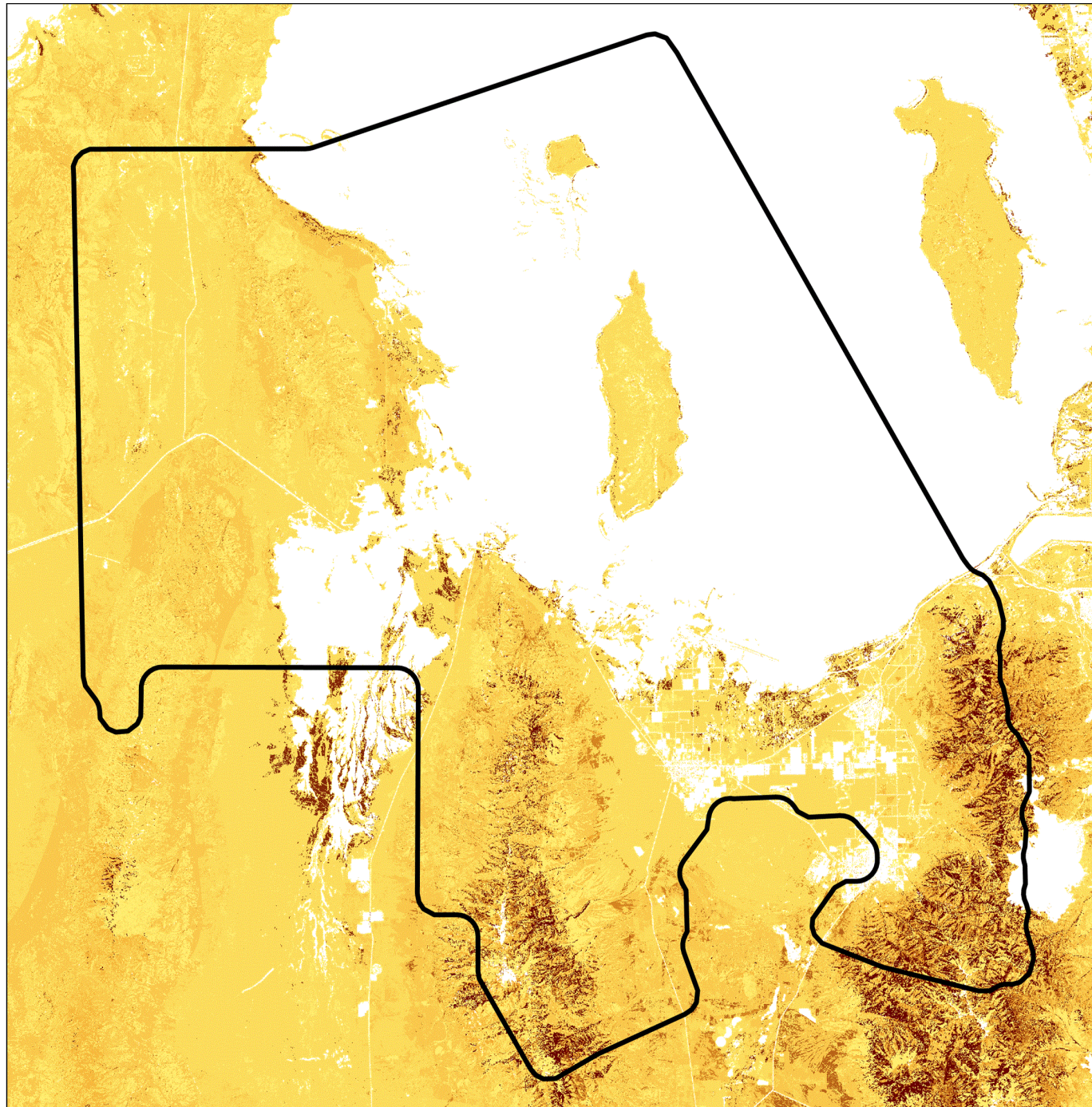
	Conditional Ember Production Category	Acres	Percent
	0	381,001	44.4 %
	> 0 - 10	75,482	8.8 %
	10 - 20	247,908	28.9 %
	20 - 30	95,118	11.1 %
	30 - 40	11,549	1.3 %
	40 - 50	5,734	0.7 %
	50 - 60	7,960	0.9 %
	60 - 70	5,053	0.6 %
	70 - 80	2,746	0.3 %
	80 - 90	5,458	0.6 %
	> 90	19,723	2.3 %
	<b>Total</b>	<b>857,732</b>	<b>100.0 %</b>



### North Tooele Fire District Conditional Ember Production

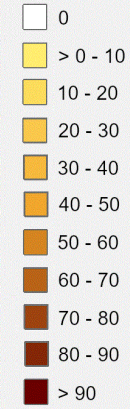






North Tooele Fire District

Conditional Ember Production



11.55 mi  
24774.4 m



Utah Wildfire Risk Assessment  
wildfirerisk.utah.gov



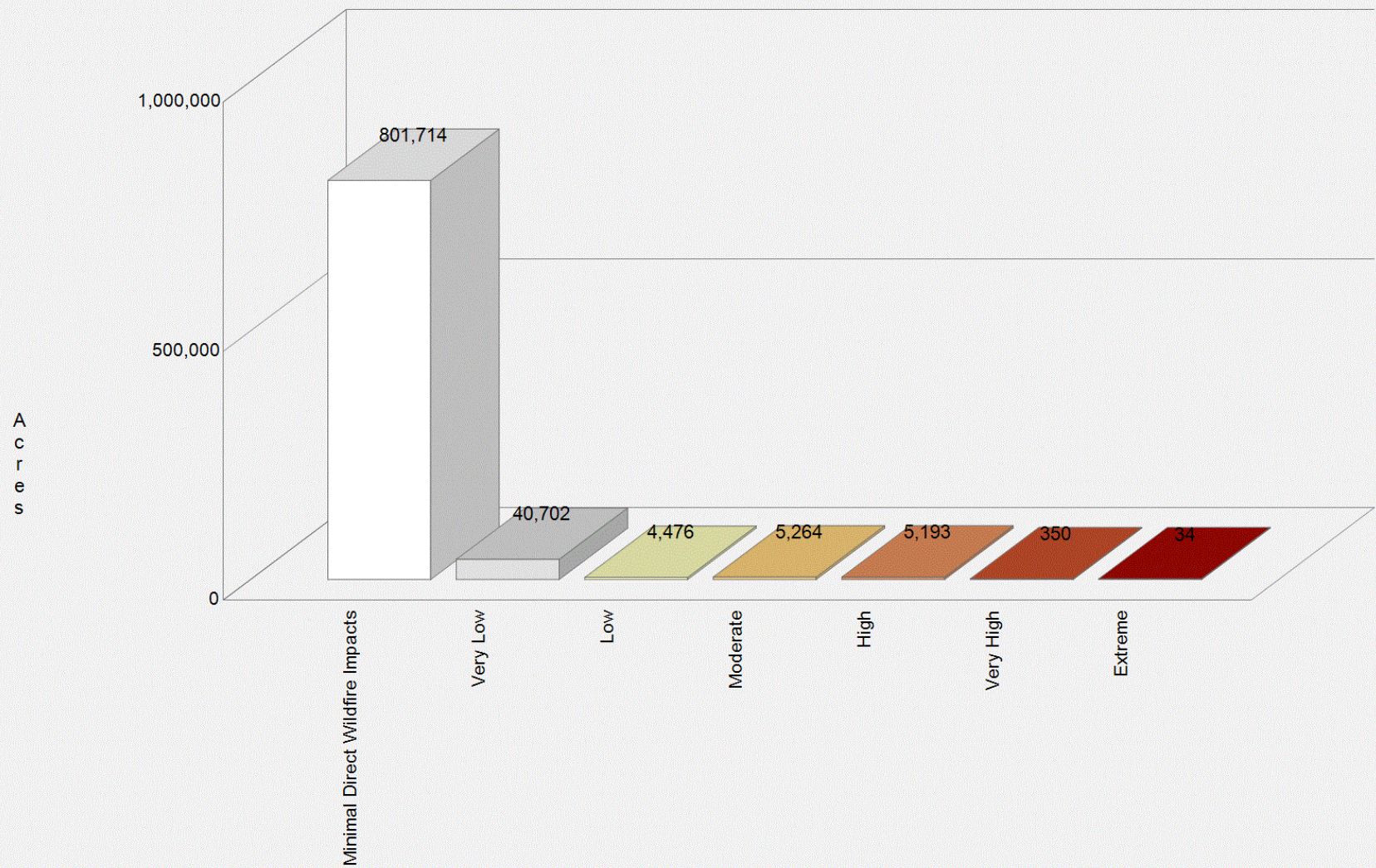
# Conditional Sources of Ember Load to Buildings

This dataset indicates where embers might land near buildings.

	Conditional Sources of Ember Load to Buildings Category	Acres	Percent
	Minimal Direct Wildfire Impacts	801,714	93.5 %
	Very Low	40,702	4.7 %
	Low	4,476	0.5 %
	Moderate	5,264	0.6 %
	High	5,193	0.6 %
	Very High	350	0.0 %
	Extreme	34	0.0 %
	<b>Total</b>	<b>857,733</b>	<b>100.0 %</b>



### North Tooele Fire District Conditional Sources of Ember Load to Buildings

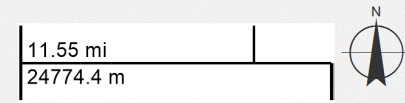




# North Tooele Fire District

## Conditional Sources of Ember Load to Buildings

- Minimal Direct Wildfire Impacts
- Very Low
- Low
- Moderate
- High
- Very High
- Extreme



Utah Wildfire Risk Assessment  
wildfirerisk.utah.gov



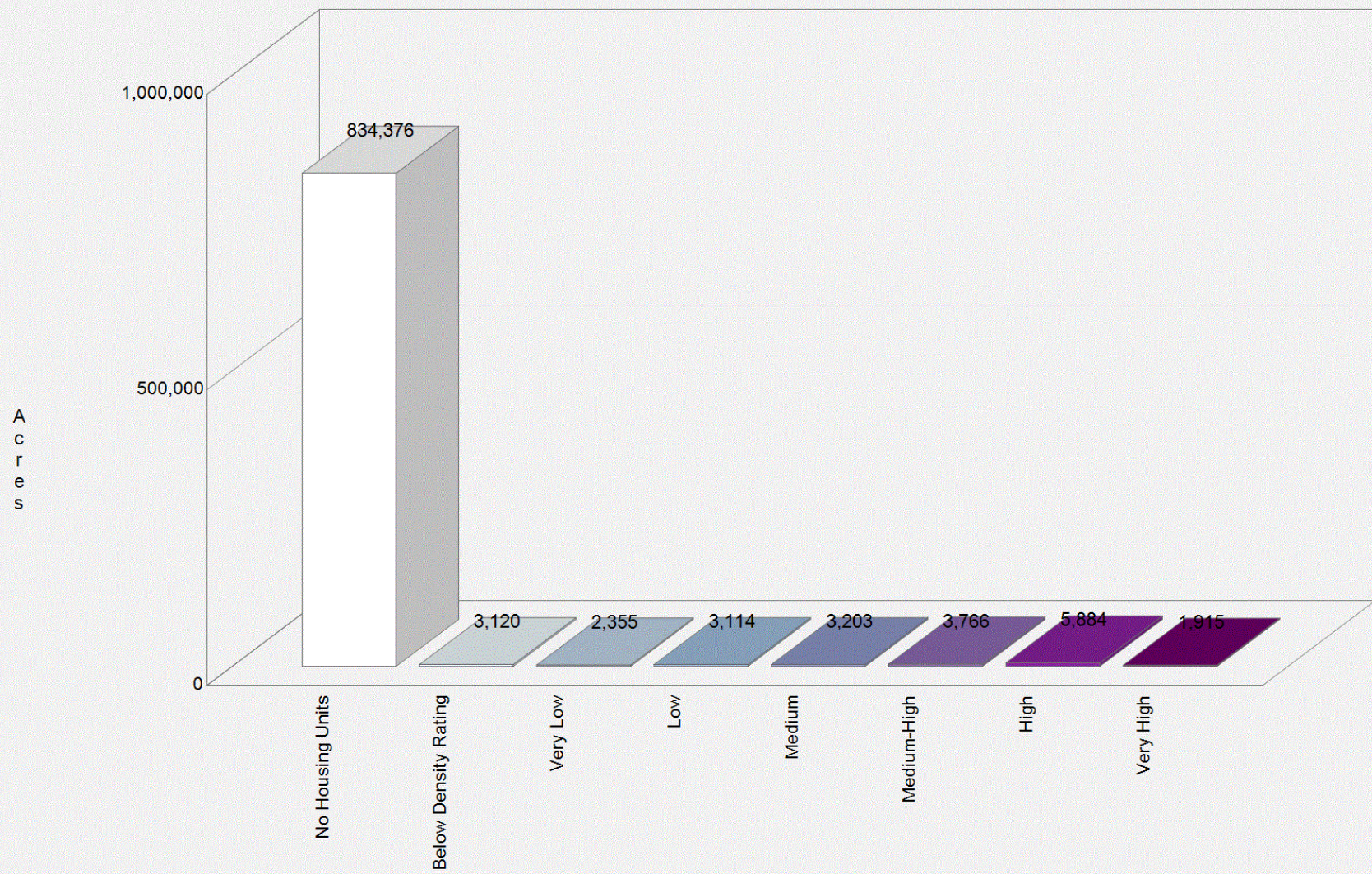
# Housing-Unit Density (HUDEN)

This dataset is the Housing-Unit Density (HUDEN) raster for the United States. HUDEN is a nationwide raster of housing-unit density measured in housing units per square kilometer. It reflects 2018 estimates of housing unit and population counts from the U.S. Census Bureau, combined with building footprint data from Microsoft (version 1.1), LandScan where building footprint data were unavailable, and land cover data from LANDFIRE.

	Housing-Unit Density (HUDEN) Category	Acres	Percent
	No Housing Units	834,376	97.3 %
	Below Density Rating	3,120	0.4 %
	Very Low	2,355	0.3 %
	Low	3,114	0.4 %
	Medium	3,203	0.4 %
	Medium-High	3,766	0.4 %
	High	5,884	0.7 %
	Very High	1,915	0.2 %
	<b>Total</b>	<b>857,733</b>	<b>100.0 %</b>



### North Tooele Fire District Housing-Unit Density (HUDEN)

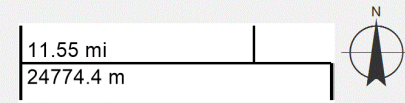




North Tooele Fire District

**Housing-Unit Density  
(HUDEN)**

- No Housing Units
- Below Density Rating
- Very Low
- Medium
- Medium-High
- High
- Very High



Utah Wildfire Risk Assessment  
wildfirerisk.utah.gov